

EDUCATION RESOURCES

– Useful Info & URLs

- Application & Web Services (Design, Hosting, Programming)
- Audience Response System
- **AVC Services:** njmsavc@njms.rutgers.edu
- **B619b & B617b** - instructional (incl. annotation capture) equipment
- Camtasia – create your own podcasts
- Classroom Technology
- Clinical Skills Center
- **Digital Signage:** njmsavc@njms.rutgers.edu
- Education Management System (Lotteries, Evaluations, Grade Book)
- iTunesU
- **Meditrek:** www.meditrek.com
- **Moodle:** moodle.rutgers.edu
- **NJMS Intranet** – Faculty Profiles
- Room Scheduling: res.njms.rutgers.edu
- **SOCRATES:** Searchable Online Curriculum Repository & Teaching Encounters System
- **Training Room:** MSB A555 (15 seat computer lab)
- **Video@NJMS:** video.njms.rutgers.edu
- **Video Conferencing:** njmsavc@njms.rutgers.edu
- Virtual Microscopy
- Wireless

RESEARCH RESOURCES

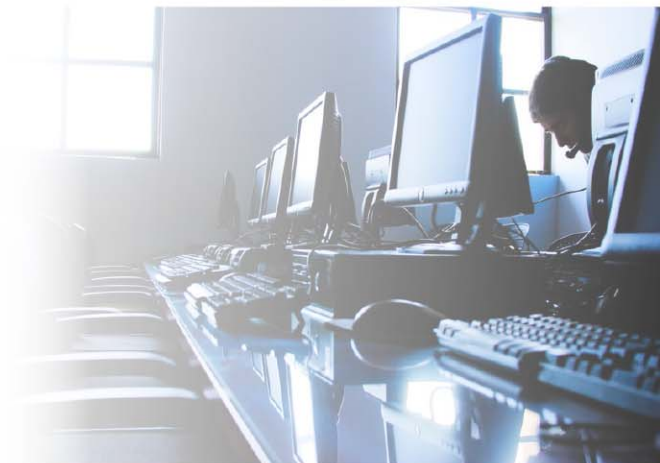
– Useful Info & URLs

- Application & Web Services (Design, Hosting, Programming)
- **AVC Services:** njmsavc@njms.rutgers.edu
- Classroom Technology
- **Comm (ownCloud):** comm.njms.rutgers.edu (file synchronization; an in-house hosted drop box-like alternative)
- **Digital Signage:** njmsavc@njms.rutgers.edu
- eCommerce
- **Filelocker:** filelocker.njms.rutgers.edu (share files w/ colleagues, collaborators)
- **Grants** – review of technical aspects
- **High Performance Computing:** njmshpc.njms.rutgers.edu
- **iTunesU** – Poster Sessions, Symposiums
- **NJMSARC:** njmsarc.umdj.edu – Academic & Research Cloud access to R: drive
- **NJMS Intranet** - Faculty Profiles
- Purchasing assistance
- **R: Drive** – Research server storage
- **Room Scheduling:** res.njms.rutgers.edu
- Scientific SW – stats packages
- **Training Room:** MSB A555 (15 seat computer lab)
- **Video@NJMS:** video.njms.rutgers.edu
- **Video Conferencing:** njmsavc@njms.rutgers.edu
- VPN (Remote Access)
- Wireless

RUTGERS

New Jersey Medical School

IT @ NJMS



The IT@NJMS office provides primary technical support for the NJMS and GSBS Newark communities (faculty, staff, and students) across Academic Systems, Application & Web Services (Design, Programming & Hosting), the Audio Visual Center, and User Services (Help Desk, Server & Network Support).

For assistance, questions, etc. on any of these products or services,

Contact Info:

General Email: njmsts@njms.rutgers.edu

Audio Visual: njmsavc@njms.rutgers.edu

Log Trouble Ticket by Calling : 3x3200

Or by emailing: isthelp@ca.rutgers.edu

Web Site: njms.rutgers.edu/it@njms/

Location: Medical Science Bldg A-550

NJMS Computer Lab : MSB A-555

University Computer Lab : MSB C level

Other Useful URLs

Humanism Blog: thehumanfabric.njms.rutgers.edu

Library: libraries.rbhs.rutgers.edu/newarklib/

Portal: myportal.rutgers.edu/

Student Council: twitter.com/njms_stuco

RBHS IS&T: rbhs.rutgers.edu/istweb/

STUDENTS

– Useful Info & URLs

Under the Student section of the IT@NJMS website, find info on:

- Audience Response System
- Clinical Skills Center
- **Digital Signage:** njmsavc@njms.rutgers.edu
- Education Management System (Lotteries, Evaluations, Grade Book)
- Help Desk support
- iTunesU
- **Meditrek:** www.meditrek.com
- **Moodle:** moodle.rutgers.edu
- **PaperCut** – print mgmt & virtual printing at: webprint.rbhs.rutgers.edu
- Security
- **Software** – Symantec Anti-Virus
- **Video@NJMS:** video.njms.rutgers.edu
- Virtual Microscopy
- Wireless

FACULTY & STAFF

– Useful Info & URLs

Under the Faculty & Staff section of the IT@NJMS website, find info on:

- Administrator Resources
- After Hours Emergency Support
- Application & Web Services (Design, Hosting, Programming)
- Audience Response System
- **AVC Services:** njmsavc@njms.rutgers.edu
- Classroom Technology
- Clinical Skills Center
- **Digital Signage:** njmsavc@njms.rutgers.edu
- eCommerce
- Education Resources
- **Email:** exchange.umdnj.edu or mail.umdnj.edu
- Education Management System
- Faculty Profiles
- Guest Accounts
- Help Desk support
- **High Performance Computing:** http://hpc.njms.rutgers.edu and http://newton.umdnj.edu
- iTunesU
- **Meditrek:** www.meditrek.com
- **Moodle:** moodle.rutgers.edu
- **NJMS Intranet** – Event Calendar, Faculty Profiles
- Purchasing
- Research Resources
- **Room Scheduling:** res.njms.rutgers.edu
- Security
- Server Storage
- **Training Rm:** MSB A555 (15 seat computer lab)
- **Video@NJMS:** video.njms.rutgers.edu
- **Video Conferencing:** njmsavc@njms.rutgers.edu
- Virtual Microscopy
- VPN (Remote Access)
- Wireless

CLINICAL RESOURCES

– Useful Info & URLs

- After Hours Emergency Support
- Application & Web Services (Design, Hosting, Programming)
- Audience Response System
- **AVC Services:** njmsavc@njms.rutgers.edu
- Clinical Skills Center
- **Digital Signage or Grand Rounds Support:** njmsavc@njms.rutgers.edu
- **Meditrek:** www.meditrek.com
- **NJMS Intranet** – Physician Profiles
- **Room Scheduling:** res.njms.rutgers.edu
- **Testing Center:** MSB A555 (15 seat computer lab can be used for resident electronic exams)
- **Video@NJMS:** video.njms.rutgers.edu
- **Video Conferencing:** njmsavc@njms.rutgers.edu
- VPN (Remote Access)
- Wireless



For Students: To register for Wireless and / or download Symantec AntiVirus, go to ISTREG: istreg.core.umdnj.edu (while on campus)

For Faculty & Staff: To register for Admin Rights, Microsoft Home Use Program, Mobile Messaging Access, VPN (Remote Access), and / or Wireless go to ISTREG: istreg.core.umdnj.edu (while on campus)

To schedule an event, go to the NJMS REServation system: res.njms.rutgers.edu

To post an event on Digital Signage, email: njmsavc@njms.rutgers.edu

For assistance, questions, etc. on any of the above or below services or products, email us at: njmsts@njms.rutgers.edu