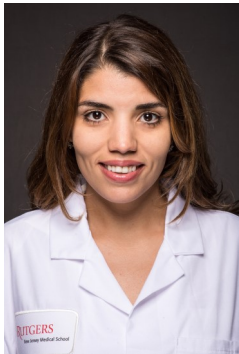


EMERGENCY MEDICINE @ NJMS

“OUR INCLUSIVENESS IS INTENTIONAL BECAUSE EXCELLENCE REQUIRES A DIVERSE COMMUNITY...”

OFFICE FOR DIVERSITY AND COMMUNITY ENGAGEMENT



Cynthia Santos, MD

Assistant Professor

One of the driving factors in my decision to join the Rutgers NJMS community was the diversity of the faculty, resident, student, and patient populations. Many of us became doctors to help the underserved, especially in the very busy emergency department that serves as a safety net for this community. In the academic setting as well, Rutgers mentors have provided me the support to further this passion. As a medical toxicologist interested in global health, I helped create a course to teach toxicology around the world in areas that lack formal training. I am also developing a global surveillance program to help monitor for symptoms related to toxic exposure sites in low and middle-income countries. As a Dominican-American, I benefited from going to public school in a diverse urban environment, and I believe everyone should have access to excellent academic training and quality medical care.

Novneet Sahu, MD, MPA

Assistant Professor



Diversity is the main reason I chose to return to Rutgers NJMS as faculty. As an Indian-American growing up and working in areas with different levels of diversity I feel privileged to work with patients, learners, colleagues, and leadership that reflect a strong sense of diversity and inclusion. These diverse minds help drive innovation and create a culture of partnership around education and healthcare. This is essential to my teaching, research,

and clinical activities in community medicine and helps foster a respectful environment for us all to learn and grow as we strive for excellence.

Karma Brown Warren, MD

Director, Volunteer Program



I have always found it an honor to work in the same city where I was raised. As an African-American physician, I feel comfortable connecting with my patients and developing a level of trust that affords me the opportunity to educate on health prevention. Here at Rutgers NJMS, I am excited about bridging Urban Health into the traditional medical school education, teaching Emergency Medicine residents, interviewing for future medical students and running the Emergency

Medicine Volunteer Program. I have stayed here at NJMS for over 13 years because this is my FAMILY.

Charles Farmer, MD

Assistant Professor

After spending all of my medical education out of state I am excited to finally return to my home state of New Jersey. The city of Newark holds a special place in my heart as many of my family members have worked in the community for many years and I have also participated in various community service projects in the city during my undergraduate years. As an African-American physician it was important to me that I join an institution that values providing quality medical services to an underserved patient population as well as encourages an environment of collaboration amongst colleagues from various backgrounds. Joining Rutgers NJMS was an easy choice as it offers me the opportunity to become involved in incorporating social emergency medicine within the teaching curriculum and helping build the next generation of culturally competent physicians.



About Rutgers New Jersey Medical School

Rutgers New Jersey Medical School (NJMS) is part of Rutgers Biomedical and Health Sciences, one of the country's largest academic health centers.

NJMS is dedicated to excellence in education, research, clinical care, and community outreach. Some pertinent facts:

- NJMS is located in Newark, NJ, where African Americans, Hispanics, Native Americans, and Asian/Pacific Islanders comprise more than 90 percent of the city's population and face many socioeconomic, educational, and health challenges.
- Underrepresented minorities made up 23 percent of the medical school's enrollment in 2017-2018.
- NJMS ranks in the 80th percentile for underrepresented minority graduates and 85th percentile for minority faculty, according to the 2017 AAMC Missions Management Tool.

EMERGENCY MEDICINE @ NJMS

"OUR INCLUSIVENESS IS INTENTIONAL BECAUSE EXCELLENCE REQUIRES A DIVERSE COMMUNITY..."

OFFICE FOR DIVERSITY AND COMMUNITY ENGAGEMENT



Rebecca Goett, MD

Assistant Residency Director and Assistant Professor

As a Mexican-American, mother, and assistant residency director, my journey has been nurtured by mentors and champions who understand and value my journey through medicine. At NJMS, I feel at home surrounded by diverse faculty and students who represent the community I grew up in. My goals at NJMS are to support our underserved patients with serious illness by providing hospice and palliative medicine in the emergency department (ED), and provide medical education by disseminating awareness and knowledge.

Tiffany Murano, MD

Professor



I am a multiracial woman who was born and raised in the Bronx, New York in a time and place where there were not a lot of individuals like me. I am also no stranger to health-care disparities as my family did not have regular access to health care. I feel that my background has definitely given me perspective and allows me to relate to not only my patients but also to my colleagues who are from varying cultures and upbringing.

Rutgers NJMS has been tremendously supportive in supporting an environment of diversity and inclusion. As the former program director of the EM residency at Rutgers NJMS, I have been fortunate to mentor residents and students to be open-minded and accepting. I sit on the Board of Directors of the Council of Residency Directors in Emergency Medicine as well as the New Jersey Chapter of the American College of Emergency Physicians and I strive to promote diversity and inclusion at Rutgers NJMS and in my specialty on a national level.

Harsh Sule, MD, MPP

Associate Professor

Program Director and Associate Director, NJMS Office of Global Health



Growing up in India and the Middle East, completing medical school and residency at urban public institutions in Chicago, working on global health projects in Azerbaijan and Sierra Leone, and working with refugees in Philadelphia makes diversity a big part of who I am and what I seek. At Rutgers NJMS I have been privileged to cooperate with colleagues across departments and schools to develop and mentor global health projects that have a positive impact on a diverse population ranging from Newark to various corners of the globe. I am constantly impressed that this school truly tries to represent the diversity that exists within the state of New Jersey. The motivation and drive of students to serve the local community is what inspires me most to support them and be engaged in simply making "the world a better place." As residency program director, my focus is on recruiting future physicians who are committed to the care of patients in our community, engage on difficult societal topics and affording opportunities to our residents to engage with the surrounding community.

Sangeeta Lamba, MD, MS, HPEd

Professor and Vice-Chancellor for Diversity & Inclusion

As Associate Dean of Medical Education at Rutgers NJMS, and now Vice-Chancellor for Diversity & Inclusion, I have had the privilege of working collaboratively, for over 20 years, with a diverse set of senior and junior faculty, residents and medical students to ensure generations of culturally competent practitioners. As a woman of color it has been a special honor to co-found the NJMS Group on Women in Medicine and Science (GWIMS) and work towards greater gender diversity, inclusion, and promotion in clinical and academic medicine.

