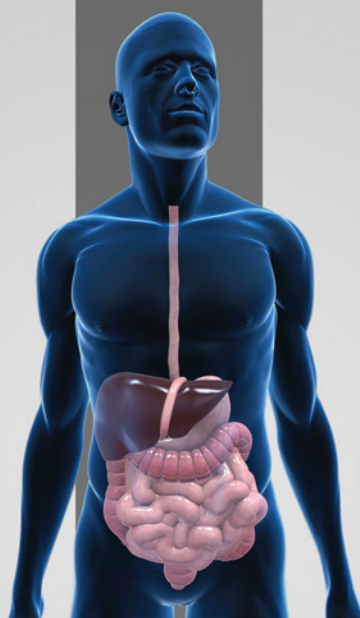


Non-Profit  
Organization  
U.S. Postage  
**PAID**  
UMDNJ

**RUTGERS**  
Center for Continuing and Outreach Education  
at Rutgers Biomedical and Health Sciences  
30 Bergen Street • ADMC 7 • Newark, NJ 07103

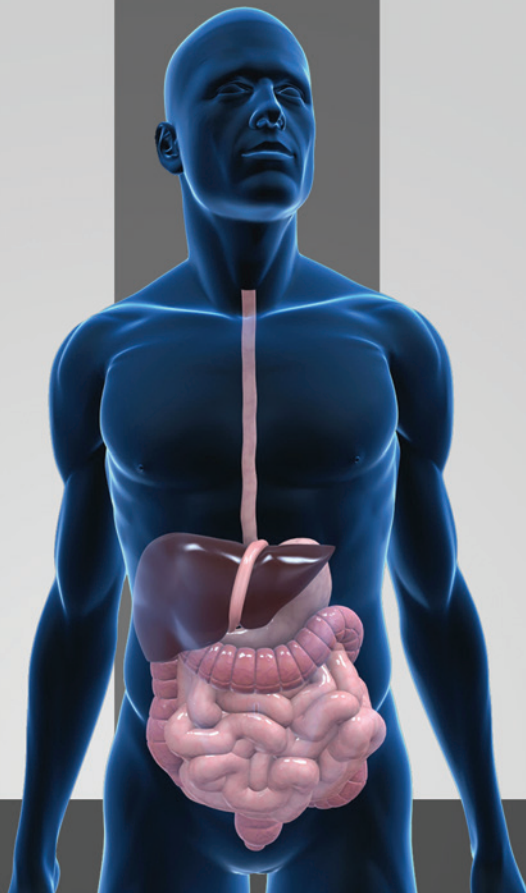


# Digestive Diseases: New Advances

**Saturday, June 7, 2014**  
7:00 a.m. to 5:30 p.m.

**Westin Governor Morris Hotel**  
2 Whippany Road  
Morristown, NJ 07960

To register: <http://cooeb.rhbs.rutgers.edu/catalog>



# Digestive Diseases: New Advances

*A CME/CE Certified Activity*

**Saturday, June 7, 2014**  
7:00 a.m. to 5:30 p.m.

**Westin Governor Morris Hotel**  
2 Whippany Road  
Morristown, NJ 07960

**SPONSORED BY:**

Rutgers New Jersey Medical School  
Department of Medicine  
Division of Gastroenterology and Hepatology  
and  
Center for Continuing and Outreach Education  
at Rutgers Biomedical and Health Sciences

**RUTGERS**

## Overview

The complexity and magnitude of medical advances in the management of digestive diseases make it ever more difficult for clinicians to apply this tremendous amount of information to their practice. This activity will provide learners with a comprehensive overview of the state-of-the-art advances in the diagnostic, therapeutic and preventive modalities of digestive diseases based on the latest evidence, literature, and clinical research. A thorough review of the current treatment landscape is vital to both clinicians and patients who can benefit from this expansion of therapeutic options.

## Learning Objectives

Upon completion of this activity, participants should be able to:

- Assess the latest evidence-based management strategies for the care of patients with digestive diseases.
- Evaluate the clinical efficacy and safety of therapeutic options for the treatment of digestive diseases.
- Evaluate the latest clinical research findings and professional society guidelines for the diagnosis and management of digestive diseases and their application into clinical practice.

## Accreditation

### Physicians

Rutgers, The State University of New Jersey is accredited by the Accreditation Council for Continuing Medical Education to provide continuing medical education for physicians.

Rutgers, The State University of New Jersey designates this live activity for a maximum of 8.45 *AMA PRA Category 1 Credits*<sup>™</sup>. Physicians should claim only the credit commensurate with the extent of their participation in the activity.


### Nurses

Rutgers, The State University of New Jersey, Center for Continuing and Outreach Education is an approved provider of continuing nursing education by the New Jersey State Nurses Association, an accredited approver by the American Nurses Credentialing Center's Commission On Accreditation. Provider Number P173-12/12-15.

This activity is awarded 8.41 contact hours. (60 minute CH)

Nurses should only claim those contact hours actually spent participating in the activity.

### Pharmacists

 Rutgers, The State University of New Jersey is accredited by the Accreditation Council for Pharmacy Education as a provider of continuing pharmacy education.

This course ACPE # 374-000-14-001-L01-P qualifies for 8.5 contact hours (0.85 CEUs) of continuing pharmacy education credit.

Pharmacists should only claim those contact hours actually spent participating in the activity.

### Physician Assistants

AAPA accepts certificates of participation for educational activities certified for *AMA PRA Category 1 Credit*<sup>™</sup> from organizations accredited by ACCME or a recognized state medical society. Physician Assistants may receive a maximum of 8.5 hours of Category 1 credit for completing this program.

## Digestive Diseases - New Advances Agenda - Saturday, June 7, 2014

7:00 a.m.	REGISTRATION AND CONTINENTAL BREAKFAST
7:45 a.m.	Welcome..... <i>Marc Klapholz, MD, FACC, FCSAI</i>
7:50 a.m.	Introductions..... <i>Nikolaos Pyrsopoulos, MD, PhD, MBA, FACP, AGAF</i>
8:00 a.m.	Keynote: Diversity in Patients with Digestive Disease Disorders..... <i>Maria L. Soto-Greene, MD</i>

### Upper GI Session

Moderator: Nikolaos Pyrsopoulos MD, PhD, MBA, FACP, AGAF

8:20 a.m.	Barrett Esophagus: Old Dog New Tricks..... <i>Stuart J. Spechler, MD</i>
8:40 a.m.	Obscure GI Bleeding: Did You Find It? ..... <i>Jamie S. Barkin MD, MACP, MACG, AGAF, FAFGE</i>
9:10 a.m.	Celiac Disease Update ..... <i>Peter H.R. Green, MD</i>
9:40 a.m.	Eosinophilic Esophagitis: The New Kid on the Esophageal Block ..... <i>Michael Demyen, MD</i>
10:10 a.m.	Panel Discussion..... <i>Drs. Barkin, Demyen, Green, Spechler</i>

### BREAK AND VISIT EXHIBITS

### Pancreas/Biliary Session

Moderator: Jamie S. Barkin, MD, MACP, MACG, AGAF, FAFGE

10:40 a.m.	Acute Pancreatitis: Management Approaches..... <i>C.S. Pitchumoni MD, MPH, FRCP(C), MACP, MACG</i>
11:10 a.m.	Treatment of Difficult Bile Duct Stones: Can You Crush it? ..... <i>Sushil Ahlawat, MD</i>

### Colorectal/IBD Session

Moderator: Warren Finkelstein, MD, MACG, AGAF, FACP

11:30 a.m.	IBD: Common Errors in the Use of Biologics for IBD Treatment... <i>Warren Finkelstein, MD, MACG, AGAF, FACP</i>
11:50 a.m.	<i>Clostridium Difficile</i> : Did You Kill the Bug? ..... <i>Lisa L. Dever, MD</i>
12:10 p.m.	Irritable Bowel Syndrome: Is It In Your Head or Your Gut? ..... <i>Zamir Brelvi, MD, PhD</i>
12:30 p.m.	Panel Discussion ..... <i>Drs. Ahlawat, Brelvi, Dever, Finkelstein, Pitchumoni</i>

### LUNCH AND VISIT EXHIBITS

### Hepatology Session

Moderator: Nikolaos Pyrsopoulos MD, PhD, MBA, FACP, AGAF

1:30 p.m.	Update on Viral Hepatitis: Dawn of a New Era..... <i>Nikolaos Pyrsopoulos MD, PhD, MBA, FACP, AGAF</i>
2:00 p.m.	HCC Update: Catheters, Pills or Surgery?..... <i>Sohail Contractor, MD</i>
2:20 p.m.	Update on Metabolic Liver Diseases..... <i>Bruce R. Bacon, MD</i>
3:00 p.m.	Hepato and Portopulmonary Hypertension Syndrome ..... <i>Marc Klapholz, MD, FACC, FCSAI</i>
3:20 p.m.	Hepatic Encephalopathy: Are We Still Confused? ..... <i>Jasmohan Bajaj, MD, MS</i>
3:50 p.m.	Panel Discussion ..... <i>Drs. Bacon, Bajaj, Contractor, Klapholz, Pyrsopoulos</i>

### BREAK AND VISIT EXHIBITS

### Pediatric Session

Moderator: Baburao Koneru, MD

4:10 p.m.	Pediatric GI: What's New About Your Future Patient..... <i>Iona Monteiro, MD</i>
-----------	--

### Surgical Session

Moderator: Baburao Koneru, MD

4:30 p.m.	Minimally Invasive Surgery: Are We There Yet? ..... <i>Michael Shapiro, MD</i>
5:00 p.m.	Abdominal Transplant Update..... <i>Baburao Koneru, MD</i>
5:30 p.m.	Closing Remarks..... <i>Nikolaos Pyrsopoulos MD, PhD, MBA, FACP, AGAF</i>
5:40 p.m.	Adjourn

### CME Activity Director

**Nikolaos Pyrsopoulos MD, PhD, MBA, FACP, AGAF**  
Associate Professor of Medicine  
Chief of Gastroenterology and Hepatology  
Rutgers New Jersey Medical School  
Medical Director, Liver Transplantation  
University Hospital, Newark, NJ

### Guest Faculty

**Bruce R. Bacon, MD**  
James F. King MD Endowed Chair in Gastroenterology  
Professor of Internal Medicine  
Saint Louis University School of Medicine  
Saint Louis University Liver Center  
St. Louis, MO

**Jasmohan Bajaj, MD, MS**  
Associate Professor of Medicine  
Division of Gastroenterology  
Associate Program Director  
Department of Internal Medicine  
Virginia Commonwealth University  
School of Medicine, Richmond, VA

**Jamie S. Barkin MD, MACP, MACG, AGAF, FAFGE**  
Professor of Medicine  
University of Miami Miller School of Medicine  
Miami, FL

**Warren Finkelstein, MD, MACG, AGAF, FACP**  
Chief of Gastroenterology, HackensackUMC  
Mountainside, Montclair, NJ  
Clinical Associate Professor of Medicine  
Rutgers New Jersey Medical School

**Peter H.R. Green, MD**  
Professor of Clinical Medicine  
Director, Celiac Disease Center, Columbia University College  
of Physicians and Surgeons, New York, NY

**C.S. Pitchumoni MD, MPH, FRCP(C), MACP, MACG**  
Clinical Professor of Medicine  
Rutgers Robert Wood Johnson Medical School and Drexel  
University; Chief of Gastroenterology  
Hepatology and Clinical Nutrition  
Saint Peter's University Hospital  
New Brunswick, NJ

**Stuart Jon Spechler, M.D.**  
Chief, Division of Gastroenterology  
VA North Texas Healthcare System  
Professor of Medicine  
Berta M. and Cecil O. Patterson  
Chair in Gastroenterology  
UT Southwestern Medical Center  
Dallas, TX

### Rutgers New Jersey Medical School Faculty

**Maria Soto-Greene MD**  
Vice Dean and Professor of Medicine  
Director, The Hispanic Center of Excellence

**Marc Klapholz MD, FACC, FCSAI**  
Professor and Chair, Department of Medicine  
Director, Division of Cardiology  
Chief of Service, University Hospital

**Sushil Ahlawat, MD**  
Associate Professor of Medicine  
Division of Gastroenterology and Hepatology  
Director of Endoscopy

**Zamir Brelvi MD, PhD**  
Clinical Assistant Professor of Medicine  
Division of Gastroenterology and Hepatology  
Director, Outpatient Services

**Sohail Contractor, MD**  
Associate Professor of Radiology  
Chief, Division of Interventional Radiology

**Michael Demyen, MD**  
Assistant Professor of Medicine  
Division of Gastroenterology and Hepatology  
Program Director, Gastroenterology Fellowship Program

**Lisa L. Dever, MD**  
Vice Chair for Education & Faculty Development  
Department of Medicine  
Associate Professor of Medicine  
Division of Infectious Disease

**Baburao Koneru, MD**  
Professor of Clinical Surgery  
Chief, Division of Liver Transplant and Hepatobiliary Surgery

**Iona Monteiro, MD**  
Associate Professor of Pediatrics  
Division Director Pediatric Gastroenterology

**Michael Shapiro, MD**  
Associate Professor of Surgery  
Surgical Residency Program Director  
Chief, Division of General Surgery

All individuals who affect the content of continuing education activities are required to disclose to the audience any real or apparent conflict of interest related to the activity. The activity faculty are further required to disclose discussion of off-label/ investigational uses in their presentations. These disclosures will be made to the audience at the time of the activity.

Rutgers reserves the right to modify the program content, faculty, and program activities. It also reserves the right to cancel the activity if necessary.

## Audience

This CE educational activity will be of interest to gastroenterologists and primary care physicians and advanced practice nurses, nurses, pharmacists, and physician assistants involved in the diagnosis, evaluation, management, and treatment of patients with digestive diseases.

## Method of Participation

In order to meet the learning objectives and receive continuing education credits, participants are expected to check in at the registration desk, attend the program and complete an online evaluation form at the conclusion of the program. A letter certifying your attendance and credit verification will be emailed to you upon completion of the online evaluation survey.

## General Information

### Registration Fee

\$100 Physicians • \$75 Non-Physicians • \$50 Residents and Fellow\* • \$25 NJMS Faculty & NJMS Residents and Fellows\*\*

\* *Registration must be accompanied by program director's letter confirming the resident/fellow status. Please fax the letter to 973-972-8377.*

\*\* *Registrants may be asked to furnish documentation confirming their employment status in order to be eligible for the complimentary rate. If it is determined that a registrant does not meet the eligibility criteria, the registrant will be required to pay the necessary tuition fee.*

Registration fee includes continental breakfast, lunch, refreshment breaks, continuing education credit, and handout materials. Registration can only be accepted through our secure online website. Payment may be made with MasterCard or Visa credit cards. American Express is not accepted. Pre-registration is recommended. On-site registration will be accommodated on a space available basis.

In an effort to provide the most complete materials to attendees and conserve resources, PDF versions of the lecture slides will be made available online to registered attendees. In addition, internet access will be available during the day of the activity so we encourage attendees to bring a laptop or tablet. Additional information will be provided in future confirmation communications.

**To Register:** <http://ccoe.rbhs.rutgers.edu/catalog>

For additional information on the registration process, please call 973-972-4267 or email at [ccoe@ca.rutgers.edu](mailto:ccoe@ca.rutgers.edu).

### Confirmation

Once registered, you will receive a confirmation letter and additional information to assist you with your plans to participate in the activity.

### Cancellation Fee/Refund

A full refund, less a \$20 cancellation fee, will be granted if notice is received up to the date of the program. Refunds cannot be given for "no shows" or cancellations received once the program has started.

### How to Cancel

Go to <http://ccoe.rbhs.rutgers.edu/portal>. Click "Log In" and enter your user name (email address) and password. Select "Current Schedule" on the top menu, and select "Cancel Registration."

### Location

Westin Governor Morris  
2 Whippany Road, Morristown, NJ 07960

A block of rooms have been set aside at the Westin Governor Morris Hotel at a rate of \$125 plus applicable state and local taxes. Rooms and rates are subject to availability at the time of reservation.

To make reservations please call:  
(973) 539-7300

### Additional Information

For additional program information, questions, or concerns, or if you require special arrangements to attend this activity, please contact Cate Mackay at 973-972-3691 or by email at [cate.mackay@rutgers.edu](mailto:cate.mackay@rutgers.edu).

Activity Code: 15MN01