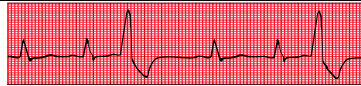


ALUMNI PULSE



Department of Physical Medicine and Rehabilitation
New Jersey Medical School

December 2011



Editorial Board

Joel A. DeLisa, M.D., M.S.
Editor and Chair,
Dept. of PM&R

Committee Members

John Bach, M.D.
Patrick Foye, M.D.
Susan Garstang, M.D.
Doreen Muhammad
Debra Roney
Valerie Trupp, M.B.A., C.R.A.



For information about the
Dept. of PM&R, you may visit
our website at:
www.umdnj.edu/pmrweb

Department of Physical
Medicine and Rehabilitation
30 Bergen Street, ADMC 101
P.O. Box 1709
Newark, NJ 07101-1709

Chair's Corner

*I want to wish each of you a safe,
healthy and happy holiday season
and a prosperous and peaceful New Year.*

As you know I have announced my retirement effective June 15, 2012. A search committee is being established to help in the selection of the next chair.

We have updated the Department website:

http://njms.umdnj.edu/departments/physical_medicine_rehabilitation/index.cfm

I decided to update the Department History and it is the December Alumni Pulse. Any suggestion for improvement or correction is greatly appreciated.

The Education Advisory Committee to the Governor has not completed its report (present deadline is December 15, 2011). It does appear that Robert Wood Johnson Medical School, the Public Health School and the New Jersey Cancer Institute will move to Rutgers. It is unclear how the Newark area colleges/Universities will be configured. It is an uncertain time, and we do need a FINAL decision so we can plan and move on.

I strongly encourage you to make a charitable donation to support our residency program. Make your checks payable to NJMS Department of PM&R.

It has been an amazing 25 years. We built a very strong department and training program. I want to thank you for your encouragement and support.

Best Wishes,

Joel A. DeLisa, M.D., M.S.
Professor and Chair

History of the Department of Physical Medicine and Rehabilitation and the Residency and Post-Doctoral Training Programs Through 2011

Joel A. DeLisa, M.D., M.S.
Luba Stefaniwsky, M.D.
Richard Sullivan, M.D.

In October 1952, the Veterans Administration Hospital in East Orange, New Jersey was opened with all essential clinical services and a well-staffed, well-organized, well-equipped and spacious Physical Medicine and Rehabilitation (PM&R) Service. Dr. Charles Brooke, the Chief of Service, who was experienced in Military Medicine, recognized the importance and need for services in PM&R in the state of New Jersey and within the VA health care system. His idea and vision for the future of PM&R gradually took shape. With the help of prominent physicians like Dr. Arthur Abramson, Professor and Chairman at Albert Einstein College of Medicine of Yeshiva University, Bronx, New York; Dr. Henry Kessler, Medical Director of the Kessler Institute, West Orange, New Jersey; and Dr. Q.B.C. Knudson, Director, PM&R Services at the Veterans Administration, Washington, D.C., this idea became a reality. These physicians played an important and vital role in the proposal, formation, and organization of the residency training program. The American College of Graduate Medical Education first officially recognized the residency training program on September 19, 1955.

In 1958, the first three-year PM&R residency program in the State of New Jersey was approved by the American Board of Physical Medicine and Rehabilitation. Initially, six positions were offered, but shortly, due to budget constraints, the number was reduced to four. There were two types of training programs: a regular three-year program, and a VA career program that offered a higher salary, but required an additional two years of service in the VA system after completion of training. Subsequently, the residency program was accredited for three years and eventually five years during each external review. This program was affiliated with the Albert Einstein College of Medicine in the Bronx, New York and the Kessler Institute in West Orange, New Jersey, for training in pediatric rehabilitation and exposure to the rehabilitation of females. Dr. Charles Brooke, who was one of the charter diplomates at the formation of the American Board of Physical Medicine in 1947, served as the first residency training director as well as the Chief of Service.

Dr. Manolio was Assistant Chief and Dr. Lemenson was in charge of the 40-bed VA rehabilitation service, including 20 beds designated for the care and rehabilitation of traumatic spinal cord injury. A PM&R evaluation clinic was conducted daily and provided consultation for patients referred from other clinical areas in the hospital. Supervision and teaching of residents was provided by Drs. Brooke, Manolio, Hoerner, and Panin. Education was enhanced by the contribution of prominent consultants such as Drs. Abramson and Kessler.

When Dr. Brooke retired in 1969, Dr. Luba Stefaniwsky, who in 1958 had been the first resident accepted into this training program in New Jersey (at an annual salary of \$2,840), became the next Chief of Service and Residency Program Director. The Service continued to grow and delivered high quality patient care. In addition to physical, occupational, and corrective therapies, special programs were provided such as driver training for the disabled, pre-vocational exploration and training, an educational program leading to the granting of high school equivalency diploma (GED), and recreational therapy. During Dr. Stefaniwsky's directorship, the Spinal Cord Injury program became an independent service. The PM&R Service was renamed the Rehabilitation Medicine Service and was relocated with a reduction of bed capacity to 20 beds.

The existing electromyography (EMG) training was enhanced by the construction of a fully insulated electrodiagnostic laboratory equipped with state-of-the-art EMG equipment. It provided a diagnostic facility for patients referred from all services in the hospital and the outpatient clinics. Dr. Weigand was in charge of this unit and Dr. Miglietta, a well-known consultant in EMG, contributed significantly to the education and training of residents in electrodiagnosis.

The Cardiac Rehabilitation Unit was organized in 1973 under the leadership of Dr. Angeles Flores, Assistant Chief of Service, a skilled and highly qualified Cardiac Rehabilitation Physiatrist. This was the first cardiac rehabilitation program in the state under the leadership of a physiatrist. It was a very useful and successful program and had significant impact on prognostic developments in cardiology and pulmonary diseases. For residents it was a unique opportunity to acquire skills and experience in cardiac rehabilitation. This program is still functioning today. The Amputee Clinic was transferred from the Orthopedic Service to the Rehabilitation Service and was conducted by a Physiatrist, Dr. Paul Loong, for both hospital and ambulatory care patients.

To facilitate training and to assess the ability of disabled patients to live independently, a special training area was designated, called the "Apartment." This facility simulated living quarters and contained a kitchen, a bathroom, a bedroom, and a family room. It served as a model facility for other rehabilitation centers in community and VA hospitals, especially for SCI centers.

This VA Residency Program in PM&R was established by pioneers in the field of rehabilitation who had creative ideas and vision, it was fully funded by the Veterans Administration in Washington, DC. The goal, commitment, and mission of the residency program was to educate and train physicians to serve the chronically ill, disabled, and handicapped population in the State of New Jersey and in VA Hospitals. That mission was very well accomplished, because many physicians who completed the residency programs during its first two decades entered the practice of psychiatry in the state or in VA hospitals and nursing homes.

The VA provided psychiatry training that was clinically-oriented. A few papers were published, as research was minimal. The program served as a foundation for the development of today's medical school-based and more academically-oriented residency program.

A Residents' Day was established in 1970 that featured an annual presentation of selected topics to the members of the New Jersey Society of Physical Medicine and Rehabilitation. This was a very successful and rewarding event and was a forum for residents to interact with other psychiatrists in the state. This program has been continued each year through the present.

The State of New Jersey took over the Seton Hall Charter in 1965 and it became the New Jersey College of Medicine. The Medical Science Building opened in 1977. While Seton Hall had the charter, it never enrolled any students. Dr. Richard Sullivan was appointed as the Acting Chairman of the Department of Rehabilitation Medicine on September 15, 1975 and served until 1987. He also was the Medical Director of the Kessler Institute for Rehabilitation (KIR) from 1969 to 1987. His appointment at the College of Medicine and Dentistry of New Jersey was based on a 20% time commitment. He administered the department from his office at KIR, but had an office in the University Hospital and Martland Building that was moved around from time-to-time. Beginning in 1976, he identified 17 psychiatrists from surrounding hospitals to receive faculty appointments to assist in the residency training program. The residency program under Dr. Sullivan's leadership had grown to seven funded positions over the three years of training. The opening of the Medical School in Newark, New Jersey broadened the scope and focus of the residency program. Residents now had the opportunity to participate in the teaching of medical students and to interact with the medical school faculty. In July 1982, the College of Medicine and Dentistry of New Jersey took over the responsibility for this residency program. Dr. Sullivan remained as the Acting Chairman, but also assumed the role of Residency Program Director, and the number of trainees was expanded to nine residents. Rotations included the KIR, College Hospital (now University Hospital), the VA Hospital in East Orange, and Children's Specialized Hospital in Mountainside. Grand Rounds were initiated on the first Friday of each month, with the location rotating among the teaching sites. In addition to Dr. Sullivan, the faculty by 1982 consisted of eight clinical instructors, four clinical assistant professors and three clinical associate professors. This included two full-time and two half-time faculty paid by University Hospital. During this period, the voluntary faculty were encouraged to attend grand rounds and to play a stronger role in the teaching program.

The initial teaching hospital was the Martland Hospital currently the Bergen Building. It housed a physical and occupational therapy unit, an administrative suite and one full-time psychiatrist. A new University Hospital opened in 1979, but it did not have a rehabilitation inpatient bed service and had only limited space for therapy. The inpatient bed service for residency training was located at KIR, while the outpatient clinics were developed in the Martland building. It was during this time that Children's Specialized Hospital became an affiliate of the program to provide pediatric experience. While the residency-training program had an immense amount of clinical inpatient and outpatient material, it lacked administrative oversight, needed more resident slots, and a program director with more dedicated time, and it was on provisional accreditation.

Dr. Joel A. DeLisa was recruited as the first department Chairman of PM&R in 1987 with 50% of his time allocated to UMDNJ-New Jersey Medical School and the University Hospital, and 50% of his time allocated to the Kessler Institute for Rehabilitation (KIR) as its Medical Director. Administrative space and support staff for the department as well as two additional physician FTEs were provided at University Hospital for a total of three. The therapy areas were enlarged. The University Hospital also provided two additional resident salary lines for a total of four and KIR provided an additional 10 for a total of 14. Over the ensuing 12 years the total number of resident positions grew to a maximum of 30, and by July 2009, to 26. Presently it is 27. The allocation of resident positions among the affiliated institutions as of July 2011 is listed in TABLE 1. From 1974 through 2011, there were 186 graduates of this program.

The overall goals of the department's training program are to enable the graduating residents to practice Physical Medicine and Rehabilitation independently at an entry level, and to assure they pass both parts of the certifying examination of the American Board of Physical Medicine and Rehabilitation. After completing our training program, each resident is expected to have mastered the skills noted in TABLE 2.

The department recognized the urgent need in the field to attract additional individuals to rehabilitation research as well as to enhance the research credentials of those already interested or active in the field. Thomas Findley, MD, PhD, was the first Research Director at the Kessler Institute for Rehabilitation. This slot was part of Dr. DeLisa's recruitment package. He laid the foundation for the present larger research program. To this end, the department established a core curriculum in research for residents, which is taught each fall in a six-week comprehensive course. Residents are expected to learn how to critically evaluate medical literature, formulate research questions, design a method to test those questions, follow through with data collection, analyze results, and prepare and submit for publication a manuscript satisfactory to their faculty research advisors. The department offers residents the opportunity to devote one half-day per week for up to six months of full-time effort to a research experience that is closely integrated with the residency program. 'Seed Dollars' are also available for specific research projects. To obtain dedicated research time the resident must receive approval of the Department's Graduate Medical Education Committee and must be performing well clinically.

Beginning in 1989, every PGY-2 resident has been required to write a review paper on a topic of his/her choice as part of the basic requirements to complete the residency program. From 1989 through 2011, 105 peer reviewed articles have been published by our trainees, with 17 in the past three years. Additional opportunities for further advanced research training are now available through the UMDNJ-Graduate School of Biomedical Sciences, including the option to obtain a masters or Doctorate degree in the field of Neurosciences (TABLE 3). In 2011 the department sponsored its 22nd annual resident/fellow/post-doctoral fellow research day, which featured 16 trainee research presentations. An annual award is given for the best resident research presenter and the best post-doctoral presenter.

The training program has produced pioneering work in objectively evaluating the clinical competency of its trainees, particularly in the use of the objective structured clinical examination (OSCE) under the leadership of Dr. Sudesh (Sheela) Jain. Peer reviewed articles have been published by our faculty, dealing with evaluating the competency of the physiatric trainee^{1,2,3,4} and with physiatry graduate medical education.⁵⁻⁴⁴

One strength of the current program has been the modular topic didactic lecture series that is repeated on an 18-month cycle. The didactic series is mandatory and is scheduled each Wednesday from 8:00 a.m. until noon and also on the first Friday of each month, also from 8:00 a.m. until noon (TABLE 4). Approximately two-thirds of these lectures are given by faculty. This series is supplemented by in-house resident courses such as electromyography, prosthetics, orthotics, administration/business, professionalism, job searching skills, and speech and swallowing. The department also sponsors the nation's largest Annual Board Review Course scheduled over a nine-day period, which is attended by residents from across the country. 2011 is the 23rd year this course has been offered. We held two "state-of-the-art" conferences that we published as supplements to major journals, "Quality of Life Measurement: Building an Agenda for the Future" – November 16 & 17, 2001, and "Clinical Trials in Medical Rehabilitation: Enhancing Rigor and Relevance" – November 1 & 2, 2002. We had planned to host one on "Rehabilitation Engineering and Robotics," but that was never accomplished.

In addition to the residency training, the Department also recognized the need to train the next generation of rehabilitation researchers in the allied health professions. As such, starting in about 1990, several grants from the National Institutes of Health (e.g. T32) and NIDRR (e.g., Advanced Rehabilitation Research and Training grants) were awarded, and the training of research fellows became a major focus of new and exciting rehabilitation research. The program has grown significantly over the years, and there are currently 12 post-doctoral fellows in diverse areas such as psychology, cognitive neuroscience, speech –language pathology, bio-engineering, and neurology. Dr. John DeLuca has served as the Director of the Post-doctoral Fellowship Program since its inception.

Teaching residents is vital to the success of the residency and post-doctoral fellowship programs, and excellence in teaching is recognized by the annual PM&R faculty teaching award. This was started in 1988 and is given to the faculty member who has been voted by the residents as the outstanding teacher of the year (TABLE 5). The program has also offered an extensive array of fellowships (TABLES 6-10), the resident's double boarding program (TABLE 11), as well as Postdocs (TABLE 12). About 30-40% of every graduating class pursues additional training. The trainees have won many national awards and recognitions (TABLE 3). Our graduating residents have been awarded the Elkins Award (highest score on the written certification examination seven times (TABLE 3). Several of our post-doctoral fellows have received early career awards in recognition of their outstanding contribution to rehabilitation research (TABLE 3) The department has published a bi-annual alumni newsletter entitled "Alumni Pulse" since 1995. Our graduates are formally surveyed approximately every three years to identify areas that should receive greater emphasis in the training program.

The research and education programs of the department were strengthened in January 1998 with the creation of the Kessler Medical Rehabilitation Research and Education Corporation (KMRREC). KMRREC was an international rehabilitation research and education organization whose primary purpose is to generate data and procedures that can be used to improve performance in

patients served by rehabilitation facilities in the United States and throughout the world. Dr. DeLisa was the President and CEO of KMRREC until June 30, 2008. He was their Founding Director until June 30, 2010. Its professional staff holds faculty appointments within the PM&R Department. It has approximately 23,000 square feet of research space. It has dedicated research laboratories such as medical rehabilitation outcomes, neuropsychology and neuroscience, rehabilitation engineering analysis, and human performance and movement analysis. These laboratories are supported by core resources including administration and computer services. Projects in areas such as spinal cord injury, traumatic brain injury, stroke, multiple sclerosis, and musculoskeletal diseases extend across the laboratories. KMRREC's name was changed in 2008 to the Kessler Foundation Research Center (KFRC). 2011 saw significant growth at KFRC. KFRC doubled its research capacity by adding approximately 20,000 sq ft to its sister campus at 300 Executive Drive in West Orange. Two key senior scientists were recruited; Jordan Grafman, Ph.D. came from the NIH, where he was the Director of the Cognitive Neuroscience laboratory, to serve as the Director of the TBI Laboratory at the KFRC. Guang Yue, Ph.D. was recruited from the Cleveland Clinic, where he served as the Director of the Laboratory of Neural Control of Movement in the Department of Biomedical Engineering, and will be the Director of the Human Performance and Engineering Laboratory at KFRC starting January 2012. In addition, several key strategic investments were made that will significantly increase the research mission of KFRC. First, the KF Board approved the purchase and development of an MRI Center dedicated to rehabilitation research to be located on the 1199 Pleasant Valley Way campus and will be operational in 2012. Second, KF also purchased the state of the art Locomat, and robotic device designed to improve mobility in various clinical populations including SCI, stroke, TBI and MS. Third, KFRC purchased the Ekso exoskeleton, which is a wearable, robotic, battery-powered exoskeleton that enables wheelchair users to stand and walk. Lastly, KFRC has provided a grant to the Christopher and Dana Reeves Foundation to support research using in-vivo epidural electrical stimulation to increase mobility in severely disabled patients.

The current resident training program is based at UMDNJ-New Jersey Medical School and University Hospital in Newark, with the following affiliated training institutions: Kessler Institute for Rehabilitation, the New Jersey Veterans Affairs Health Care System, Children's Specialized Hospital, and Mountainside Hospital (TABLE 1). The department has a vast amount of clinical material, and the residents see all the patient populations mandated by the ACGME PM&R residency review committee. Administrative oversight is provided to the training program by the department's Graduate Medical Education Committee. It consists of faculty representatives from each affiliated institution, the Vice President for Research and the Director of Education at Kessler Foundation, the residency training director, two chief resident representatives (administrative and academic), the residency program's administrative coordinator, and one clinical fellow representative. This committee meets on the second Tuesday every other month and monitors the training program and the trainees' experience. Other department committees are listed in TABLE 13. A resident policy and procedure manual has been developed, as well as patient/procedure logbooks and a Department Logo (TABLE 14). The training program received a full five-year accreditation by the PM&R Residency Review Committee (RRC) of the Accreditation Council for Graduate Medical Education (ACGME) at the most recent site visit in May 2009. We received a five year accreditation for both the General and the SCI Medicine Program. This is the maximum that can be obtained. The General Program demonstrated substantial compliance with the ACGME requirements without citations. The committee particularly commended the program for its extensive and excellent educational curriculum, use of OSCE for competency assessment, the emphasis on scholarly activity among the faculty (especially among the residency staff), and the outcomes regarding ABPMR Board scores.

The department conducts a mandatory medical student teaching program and approximately 175 New Jersey Medical School students annually take the two-week mandatory PM&R rotation in their third or fourth year. This clerkship was part of Dr. DeLisa's initial recruitment package. We teach in all four years of the medical student curriculum. This student exposure has resulted in many medical students choosing psychiatry as their career. We are in the top ten of medical schools recruiting students into our specialty (TABLE 15a & 15b). Our faculty has also taught in the problem-based learning course for five years, and in the musculoskeletal lectures as part of the Introduction to Clinical Science course for second-year medical students. In 1999, we initiated a series of musculoskeletal workshops using standardized patients for the medical students. Additionally, since 1992, the department has sponsored a summer research fellowship for interested medical students. Over the past five years, a total of nine medical students have participated. One of our faculty gives the gait lecture in the Gross Anatomy course and our residents teach first-year medical students in the gross anatomy laboratory. Each year we also average about 75, two-or four-week medical student electives, half of which are filled with students from other schools. However, in 2010/11 we had 102. We have used a printed medical student syllabus for 12 years that is updated annually. The residents are very active in medical student teaching and they are given formal instructions in how to improve their teaching skills. An award is given to the resident who is the best teacher, from the medical students' perspective (TABLE 16). Since 1996, the department has offered an Annual Medical Student PM&R Award, given to the outstanding fourth year NJMS medical student. Faculty members serve as medical student advisors and conduct interviews of prospective students for the Medical School Admissions Committee. In 2007 a PM&R Medical Student Special Interests Group was started. It has been very successful. Dr. DeLisa's philosophy is that we will accept all medical student curriculum teaching opportunities. We believe this department offers the largest amount of medical student exposure to the specialty in the nation.

Dr. DeLisa has served as the Residency Program Director or Co-Director from 1987-2005. Susan Garstang, M.D., joined the faculty in July 2005 as Residency Program Director. Others who have served as training director are listed in TABLE 17. The program stresses clinical competency from its trainees. The overall philosophy of the department is to encourage its graduates to be advocates for the disabled and to professionally contribute more than they receive. The department strives to be a leader in the training of the academic physiatrist and to be actively involved in graduate medical education at the local and national levels. The department annually invites an outstanding academic physiatrist to receive the New Jersey Medical School National Teaching Award in Psychiatry (TABLE 18). These individuals spend two days with the faculty and residents adding to the academic milieu.

By the mid-1990s, the department had developed a website, primarily as a tool for recruitment of resident candidates. By the turn of the century this medium had broadened its scope to begin addressing the needs of the department's other constituencies, such as its medical students, its faculty, its alumni and its postdoctoral fellows. While some enhancements have been made, the department has only partially realized its vision for using web-based media, due to limitations in funding as well as a dependence on outside entities for programming expertise. This website links to the Kessler Foundation website (<http://www.hhkfdn.org/>) that describes its research and education initiatives.

In 2001 the department initiated a strategic planning process to update an earlier plan that had been developed in the mid-1990s. The new effort was spearheaded by the chairs of the eight major committees that address the major functional areas of the department (TABLE 13): (See the PM&R website at: http://njms.umdnj.edu/departments/physical_medicine_rehabilitation/index.cfm).

- Alumni
- Appointments & Promotions Committee
- Continuing Medical Education
- Graduate Medical Education
- Medical Clinical Fellowships
- Post doctoral trainees
- Research

In addition to its weekly didactics lecture series and monthly grand rounds series, the department also sponsors lectures by prominent specialists on topics that will be of interest to its trainees and faculty. The Excellence in Clinical Practice series, sponsored by Procter & Gamble, and now known as the Scott Nadler, D.O. Memorial Lecture brought an outstanding musculoskeletal practitioner to the department each year. Another series known as the Elizabeth Narcessian Memorial Lecture honors a deceased PM&R faculty member who was known for her compassion toward patients experiencing pain. Recent presenters in these named lecture series have been as follows:

Procter & Gamble Excellence in Clinical Practice Lecture	Elizabeth Narcessian Memorial Lecture
2000: Michael Geraci, Jr., M.D., PT	2001: Russell K. Portenoy, M.D.
2001: Joel M. Press, M.D.	2002: James Rainville, M.D.
2002: Edward Laskowski, M.D.	2003: Gregory J. Rokosz, D.O., JD
2003: William F. Micheo, M.D.	2004: Andrea Cheville, M.D.
2004: Jay Smith, M.D.	2005: Joseph Valenza, M.D.
2005: Larry H. Chou, M.D.	2006: Jeffrey A. Berman, M.D.
2006: Heidi Prather, M.D.	2007: Michael Brennan, M.D.
2007: Michael Fredrickson, M.D.	

By 2011, the department had grown to 105 faculty members (including clinical titles) and these faculty members published approximately 50 peer-reviewed articles, nine book chapters and two books per year. Educational articles by faculty are noted in TABLE 19. A complete list of faculty appointments within the department in June 2009 is provided in TABLE 20, while a cumulative list of textbooks authored by the faculty during the period from 1994 to 2011 is provided in TABLE 21. The department has presented an annual Distinguished Alumni Award since 1999. The annual recipients are noted in TABLE 22. External grant funding has increased to approximately \$ 4 million in 2011 at the Kessler Foundation Research Center and \$730,000 per year at UMDNJ's Newark campus, including training grants. As of 2008, the department conducts grants from the National Institute on Disability and Rehabilitation Research (NIDRR) for both a Spinal Cord Injury Model System and a Traumatic Brain Injury Model System. These are administered through the Kessler Foundation Research Center.

The department ended 2011 with five paid faculty located at UMDNJ-NJMS in Newark. Those faculty who have been employed by either New Jersey Medical School or University Hospital are noted in TABLE 23. Medical Resident graduates of the training program since 1988 are listed on TABLE 24; 100% of our residents have passed Part 1 (written) of our Board certification examination.

Offices for these faculty are located in several different buildings, including the hospital, the Doctor’s Office Center, and the Administrative Complex (ADMC) where the office of the Chair is located. The ADMC office also has a faculty conference room, a library, adequate filing space, an office for visiting researchers, a chief residents’ office, and several other types of support space.

The history of this training program is filled with many great moments and leaders. As we look back with pride over its accomplishments, we also look forward with a renewed sense of determination to offer the best possible training to our medical students, residents, fellows, and post-docs within a rapidly changing health care environment. We believe the quality of our trainees and our research in concert with our clinical programs will dictate our future place in the specialty.

Dr. DeLisa legacy are the physiatrist he has trained and his textbook. The fifth edition of *Physical Medicine and Rehabilitation: Principles and Practice* was released November 15, 2010. Dr. Joel A. DeLisa serves as Editor Emeritus on the textbook. Bruce Gans is an Associate Editor. Todd Stitik is on the Editorial Board. Numerous faculty and past trainees contributed to the textbook. The book is two volumes, 83 chapters and 2,432 pages in length. Our Department has also gained notoriety by Dr. DeLisa being so extremely active in national and international organized medicine professional societies. He was chair of the Education Commission for Foreign Medical Graduates (ECFMG) and was instrumental in the establishment of the USMLE – Step 2 clinical skills examination. He served as chair of the American Board of Medical Specialties (ABMS), the umbrella organization above all the certification Boards. He also served as chair of the Council of Academic Societies (CAS) of the Association of American Medical Colleges (AAMC) which represents all 133 accredited U.S. and 17 accredited Canadian schools, approximately 400 major teaching hospitals and health systems, the Department of Veterans Affairs medical centers, and nearly 90 academic societies. No physiatrist has ever held these positions. In 2011 he was also selected into the Institute of Medicine (IOM).

Joel DeLisa is currently a member of the National Board of Medical Examiners (NBME) and is the immediate Past President of the International Society of Physical and Rehabilitation Medicine (ISPRM). He has previously served as President of the American Association of Electrodiagnostic Medicine (AAEM), and Chair of the American Board of Physical Medicine and Rehabilitation (ABPM&R), the Association of Academic Physiatrists (AAP), and the American Paraplegia Society (APS). He was editor of the Journal of Spinal Cord Medicine from 1999 to 2005 and served other editorial boards. He was the driving force in establishing the first subspecialty certification examination: SCI medicine.

The Kessler Foundation’s established Joel A. DeLisa, MD Award for Excellence in Research and Education in the Field of Physical Medicine and Rehabilitation was announced in 2010. The award will be presented annually for 20 years to a physician and/or scientist who has demonstrated a significant impact on the field of PM&R, particularly as it relates to the translation of research and education in patient care. One annual award will be presented in the amount of \$50,000. The first award was given May 12, 2011 to Walter Frontera, MD, PhD.

He was also the recipient of the Derrick T. Vail Award by the American Board of Medical Specialists (ABMS). The award recognizes extraordinary national or international contributions to the broad field of medical specialty education, evaluation or certification. This is only the second time it has been given.

TABLE 1

RESIDENT POSITIONS, ALLOCATION BY FACILITY, 2009

University Hospital, Newark	4
Kessler Institute for Rehabilitation	11
New Jersey Veterans Health Care System	9
Children’s Specialized Hospital	2
Mountainside Hospital	<u>1</u>
	27

TABLE 2

**SKILLS THE PHYSIATRY TRAINEE SHOULD POSSESS AFTER
COMPLETING THE TRAINING PROGRAM**

Clinical

- Provide Physical Medicine and Rehabilitation services in a competent and humanistic manner.
- To be able to participate in educating health care professionals and patients.
- Appreciation for the importance of cost-effectiveness in the management of patients.
- Perform a physiatric evaluation and formulate a rehabilitation plan which deals comprehensively with all relevant problems.
- Prescribe appropriate therapeutic measures, develop and implement individualized follow-up plans, and perform procedures appropriate to various Physical Medicine and Rehabilitation roles.
- Respond to psychosocial problems and provide systemized alternatives.

Teaching

- Teach others, including residents, medical students, health care professionals, patients, and significant others about the art and science of Physical Medicine and Rehabilitation.
- Develop a basic working knowledge of appropriate methodologies and their use in varied settings and an appreciation. For the importance of the educational process.
- Develop skills in relaying knowledge in the rehabilitation disciplines to colleagues, health care professionals and the lay community.

Administration

- Assume a leadership role within organized medicine, the specialty, and in the community.
- Demonstrate effective leadership in patient management activities and accept responsibility for outcomes.
- Demonstrate leadership in crisis situations.
- Demonstrate mediation skills among/between various team members.
- Develop and maintain professional interactions with other specialists, staff, students, faculty, lay community, patients and families.
- Produce and Document work in styles appropriate to the service given or role assumed.
- Understand the health care system sufficiently to effectively solve practice problems that arise in Physical Medicine and Rehabilitation settings.

Research

- Conduct clinical, applied or basic research in the field of Physical Medicine and Rehabilitation.
- Appreciate the importance of scholarly activity in the field.
- Be knowledgeable in the field of Physical Medicine and Rehabilitation and identify specific areas in need of initial or continued research.
- Be able to critically analyze scientific activity in the field.
- Be able to initiate and develop research projects.

TABLE 3

**HONORS, AWARDS AND SPECIAL APPOINTMENTS
UMDNJ – NJMS PHYSICAL MEDICINE & REHABILITATION
RESIDENTS AND POST-DOCTORAL FELLOWS**

Awarded Graduate Degrees

- | | | |
|------------------------------|--------------|------|
| 1. Denise Campagnolo, MD, MS | Neuroscience | 1993 |
| 2. Alan Davis, MD, PhD | Neuroscience | 1996 |
| 3. Joseph Cheu, DO, PhD | Neuroscience | 1998 |

Earl Elkins Award*Highest Score on Part I (Written Examination)*

1. William Bockeneck, MD 1991
2. Joe Peters, MD 1993
3. Lisa Krivickas, MD 1995
4. Elaine Aufiero, MD 2004
5. Akshat Shah, MD 2006
6. Jessica Bloomgarden, MD 2008
7. Jonathan Kirschner, MD 2009

Ernest Bors Award*Best Research Article in Spinal Cord Injury in the Journal of Spinal Cord Medicine
(Resident or Fellow - Only one award given annually)*

1. Andrea Cheville, MD 1995
2. Jason Lipetz, MD 1997
3. Alfred Tomaio, MD 1998
4. John Horton III, MD 1999
5. Chester Ho, MB, Chair 2001
6. Qing Tai, MD, PhD 2003

AMA/Glaxo Wellcome Leadership Award for Outstanding Community Service

1. Brian Davis, MD 1998

Elected Alpha Omega Alpha (AOA) as a resident

1. John Shumko, MD, PhD 1996
2. Andrea Cheville, MD 1997
3. Alice Chen, MD 1998
4. Yong Park, MD 2001
5. Nancy Kim, MD 2002

Elected Alpha Omega Alpha (AOA) as alumni or faculty

1. John Bach, MD (Alumni) 1992
2. Joel DeLisa, MD, MS (Faculty) 1994
3. Steve Kirshblum, MD (Faculty) 1997
4. Gerard Malanga, MD (Alumni) 2004
5. Todd Linsenmeyer, MD (Faculty) 2006

Stanley S. Bergen, Jr., M.D. – Medal of Excellence

1. Joseph Cheu, DO, PhD 1998

Organization of Resident Representatives to the A.A.M.C. (Two year terms)

1. John Shumko, MD, PhD 1994 - 1996
2. Jason Lipetz, MD 1996 - 1998
3. Rachael Smith, DO 1999 - 2001
4. Jennifer H. Solomon, MD 2001 - 2003
5. Gary Chimes, MD, PhD 2004 - 2006
6. James Wyss, MD, PT 2008 - 2010

Missouri Arthritis Rehabilitation Research Center: Research Enrichment Course

1. Irving Haber, DO 1992 - 1993
2. John Chae, MD 1992 - 1993
3. Lisa Krivickas, MD 1993 - 1994
4. Andrea Cheville, MD 1996 - 1997
5. Tie Qian, MD 1999 - 2000

Physical Medicine and Rehabilitation Residency Review Committee (RRC)

1. Alice Chen, MD 1997 - 1999
2. Susan V. Garstang, MD 2011-

New Investigator Award (AAPM&R)

- | | |
|------------------------------|------|
| 1. Denise Campagnolo, MD, MS | 1993 |
| 2. Tie Qian, MD | 2000 |
| 3. Qing Tai, MD, PhD | 2000 |

Best Research Paper Award (AAPM&R)

- | | |
|----------------------|------|
| 1. Qing Tai, MD, PhD | 2002 |
|----------------------|------|

American Medical Association Representative for PM&R

- | | |
|------------------------|-------------|
| 1. Pietro Memmo, MD | 2000 - 2001 |
| 2. Robert Savarese, DO | 2001 - 2002 |

Arnold P. Gold Foundation – Humanism and Excellence in Teaching Award

- | | |
|------------------------|------|
| 1. Gautam Malhotra, MD | 2002 |
| 2. James McLean, MD | 2003 |

American Osteopathic College of PM&R Resident Writing Award

- | | |
|----------------------------|------|
| 1. Charles Buttaci, DO, PT | 2004 |
|----------------------------|------|

Association of Academic Psychiatrists Positions

- | | | |
|----------------------------|---|-------------|
| 1. Gary Chimes, MD, PhD | Medical Education Committee | 2003 - 2005 |
| 2. Gary Chimes, MD, PhD | Organization of Resident Representatives | 2004 - 2005 |
| 3. Ariz Mehta, MD | Liaison to the Performance Guidelines Taskforce | 2006 |
| 4. Steve Aydin, DO | Liaison to the Public Affairs Committee | 2007 |
| 5. Jonathan Kirschner, MD | RPC Secretary/Program Director | 2007 |
| 6. Lisa Varghese-Kroll, MD | Liaison to Leadership Development/Recognition Committee | 2007 |
| 7. Gina Benaquista, DO | RPC Information and Technology Representative | 2007 |
| 8. Lucy Liang, MD | Liaison to Advancement Committee | 2007 - 2008 |
| 9. James Wyss, MD, PT | Vice-Chair of Resident and Fellows Council | 2008 |
| 10. James Wyss, MD, PT | Chair | 2009 |
| 11. Amanda Farag, MD | AAP Residents Fellows Council, Liaison to the Advancement Committee | 2010 - 2011 |

American Academy of PM&R, Resident Physical Council

- | | | |
|-----------------------|--|-------------|
| 1. Steve Aydin, DO | Liaison to the Professional and Public Awareness (PPA) Committee | 2007 - 2008 |
| 2. Brett Gerstman, MD | Liaison to the Quality Practice and Policy Committee | 2007 - 2008 |
| 3. Brett Gerstman, MD | Chair | 2008 |
| 4. SuAnn Chen, MD | RPC Residency Program Liaison Chair | 2010 - 2011 |

National Academy of Neuropsychology Early Career Award

- | | |
|--------------------------------------|------|
| 1. Nancy Chiaravalloti, PhD | 2005 |
| 2. Juan Carlos Arango-Lasprilla, PhD | 2011 |

New Jersey Psychological Association

- | | |
|-----------------------------------|------|
| 1. Jean Lengenfelder-Brennar, PhD | |
| a. Early Career Award | 2010 |
| 2. Bruce Diamond, PhD | |
| a. Distinguished Researcher Award | 2010 |
| 3. Karen Hwang, PhD | |
| a. Dissertation Award | 2005 |

American Psychological Association

1. Juan Carlos Arango, PhD
 - a. Division 22 Mitch Rosenthal Early Career Award 2009
 - b. Division 45 Emerging Professional Award 2009
2. Nancy Chiaravalloti, PhD
 - a. Division 22 Mitch Rosenthal Early Career Award 2007
 - b. Division 40 Early Career Award 2009

National Academy of Neuropsychology Early Career Award

1. Nancy Chiaravalloti, PhD 2005

New Jersey Neuropsychological Society Postdoctoral Research Award

1. Jessica Kalmar, PhD 2003

Brain Injury Association of New Jersey Founder's Award

1. Juan Carlos Arango-Lasprilla, PhD 2006

Mitch Rosenthal Resident/Fellow Research Award

1. Heather Walker, MD 2007
2. Jessica Bloomgarden, MD 2008
3. Margaret Schmitt, PhD 2008
4. Gina Benaquista, DO 2009
5. James Sumowski, PhD 2009
6. Stephanie K. Liu, MD 2010
7. Sarah Dubowsky, PhD 2010
8. Benjamin Levy, MD 2011
9. Victoria Leavitt, PhD 2011

TABLE 4

The modules for the didactic series are as follows:

1. Spinal cord injury
2. Pediatrics
3. Rheumatology and vascular conditions
4. Geriatrics
5. Sports medicine/musculoskeletal
6. Electrodiagnosis
7. Industrial/occupational and chronic pain
8. Anatomy/biomechanics
9. Traumatic brain injury
10. Stroke
11. Neuromuscular
12. Pulmonary/cardiac
13. Other lectures are also incorporated during the above modules; burns, cancer and palliative care, vocational rehab, quality improvement, acupuncture, health disparities, culturally competent care, exercise prescription, modalities, therapist's presentations, radiology, trauma, HIV/AIDS.

We also hold separate 1/2-day workshops during the Wednesday didactic time, including:

- Anatomy in cadaver lab
- Cranial nerve and mental status testing skills
- EMG/NCS skills
- Joint injection skills
- Physical exam skills
- Professionalism

TABLE 5**ANNUAL TEACHING AWARD SINCE 1988**

1988 - 1989	Martin Diamond, MD
1989 - 1990	Angeles Flores, MD
1990 - 1991	Richard Katz, MD
1991 - 1992	Steven Kirshblum, MD
1992 - 1993	Elizabeth Narcessian, MD
1993 - 1994	Ronald Tolchin, DO
1994 - 1995	Denise Campagnolo, MD, MS
1995 - 1996	Todd Stitik, MD
1996 - 1997	Chae Im, MD
1997 - 1998	Kevin O'Connor, MD
1998 - 1999	Bruce Pomeranz, MD
1999 - 2000	Barbara Benevento, MD
2000 - 2001	Steven Kirshblum, MD
2001 - 2002	Boqing Chen, MD, PhD
2002 - 2003	Steven Kirshblum, MD
2003 - 2004	Chae Im, MD
2004 - 2005	Rex Ma, MD
2005 - 2006	Peter Yonclas, MD
2006 - 2007	Barbara Benevento, MD
2007 - 2008	Peter Yonclas, MD
2008 - 2009	Mylan Lam, MD
2009 - 2010	Chae Im, MD
2010 - 2011	Nigel Shenoy, MD

TABLE 6**SPORTS MEDICINE/MUSCULOSKELETAL FELLOWS**

<u>Training Year</u>	<u>Fellow</u>	<u>Residency Program</u>
1995 - 1996*	Scott Nadler, DO	New Jersey Medical School
1996 - 1997	Brian Davis, MD	New Jersey Medical School
1997 - 1998	Ilana Zabloski-Amir, MD	New Jersey Medical School
1998 - 1999	Jay Bowen, DO	Tufts University
1999 - 2000	John Wrightson, MD	University of Pittsburgh
2000 - 2001	Stephen Andrus, MD	Cornell University
	Phillip Landes, MD	Walter Reed Army Med Center
2001 - 2002	Thomas Agesen, MD	Cornell-NY Presbyterian
	Garrett S. Hyman, MD	University of Washington
2005 - 2006	Joshua Levy, DO	New York College of Osteopathic Medicine
2006 - 2007	Christopher Castro, DO	New York College of Osteopathic Medicine
	Michael Mehnert, MD	New Jersey Medical School
2007 - 2008	Jonas Sokolof, MD	Harvard Medical School, Spaulding Rehabilitation
	Jacob Strong, MD	Emory University
2008 - 2009	Stacey Franz, DO	New York Presbyterian Hospital
	Priti Vohra, DO	Nassau University Medical Center
2009 - 2010	Jeffrey Chacko, MD	Albert Einstein Montefiore Med Center
	Joseph Mejia, DO	New York Univ/Rusk Institute of Rehab
	Pinella Holder, DO	Univ of Rochester Medical Center
2010 - 2011	James Chang, MD	NYU Medical Center
	Fernando Gonzalez, MD	Montefiore Medical Center
	Janel Solano, DO	New Jersey Medical School

SPORTS MEDICINE/MUSCULOSKELETAL FELLOWS (cont'd)

2011 - 2012	Mohammed Dorri, MD Benjamin Levy, MD Salvador Portugal, MD	Upstate Medical School New Jersey Medical School Rusk University Medical School
-------------	--	---

**Research Fellowship Slot*

TABLE 7

**PHYSICIAN RESEARCH FELLOWS
(NIDRR OR NIH TRAINING GRANTS)**

1.	Tetsuo Ikai, MD	05/01/92 - 05/01/94
2.	Shin-Ichi Izumi, MD, PhD	05/01/92 - 05/01/94
3.	Denise Campagnolo, MD, MS	07/01/92 - 07/01/93
4.	Alan Davis, MD	07/01/92 - 09/30/96
5.	Heakyung Kim, MD	09/01/92 - 06/30/93
6.	Kozo Hanayama, MD	05/01/93 - 10/15/94
7.	Philip Melchiorre, MD	07/01/93 - 06/30/94
8.	Andre Taylor, MD	01/01/94 - 08/31/94
9.	Scott Nadler, DO	07/01/04 - 06/30/95
10.	Atsushi Sugimoto, MD	10/03/94 - 03/31/96
11.	Hallie Robbins, DO	10/03/94 - 09/30/96
12.	Yukihiro Hara, MD	10/30/94 - 12/31/95
13.	Hidekazu Sugawara, MD	05/20/96 - 03/31/98
14.	Joseph Cheu, DO, PhD	07/01/96 - 06/30/98
15.	Trevor Dyson-Hudson, MD	07/01/97 - 02/30/00
16.	Alice Thaw Tzeng, MD	07/01/98 - 06/30/99
17.	Marguerite Diab, MD, MSc	12/06/99 - 12/01/01
18.	Yali Li, MD, PhD	07/09/01 - 07/08/02
19.	Wahid Rashidzada, MD	04/01/03 - 03/31/05

TABLE 8

SPINAL CORD INJURY FELLOWS

<u>Training Year</u>	<u>Fellow</u>	<u>Residency Program</u>
1995 - 1996	Donna Ferraro, MD	Kingsbrook Jewish
1996 - 1997	Barbara Benevento, MD	New Jersey Medical School
1997 - 1998	John Horton, MD	New Jersey Medical School
1998 - 1999	Susan V. Garstang, MD	Baylor College of Medicine
	Marianne I. Grew, MD	University of Utah
1999 - 2000	Chester H. Ho, MD	Harvard
	Mylan N. Lam, MD	Tufts
2000 - 2001	Rosemarie Filart, MD	Baylor College of Medicine
	J. Glen House, MD	Baylor College of Medicine
	Yong Park, MD	New Jersey Medical School
2001 - 2002	Stacey Harris, MD	NYU
	Ki Alex Kim, MD	Northwestern
2002 - 2003	William Scelza, MD	University of Michigan
	Matthew Shatzer, DO	Sinai-Johns Hopkins
2003 - 2004	Karen Kepler, DO, PhD	New Jersey Medical School
	Maya Therattil, MD	Montefiore

SPINAL CORD INJURY FELLOWS (cont'd)

2004 - 2005	Monifa Brooks, MD Gary Galang, MD	National Rehab Hospital University of Pittsburgh
2005 - 2006	Vidya Sreenivasan	University of Ottawa, Canada
2006 - 2007	Akshat Shah, MD Heather Walker, MD	New Jersey Medical School University of Pittsburgh
2007 - 2008	Jeremiah Nieves, MD	New Jersey Medical School
2008 - 2009	Jessica Bloomgarden, MD	New Jersey Medical School
2009 - 2010	Gina Benaquista, DO	New Jersey Medical School
2010 - 2011	Miguel Coba, MD	New Jersey Medical School
2011 - 2012	Wesley Chae, MD	Emory University

TABLE 9

PEDIATRIC REHABILITATION MEDICINE FELLOWS

<u>Training Year</u>	<u>Fellow</u>	<u>Residency Program</u>
1992 - 1993	Michael Armento, M.D.	New Jersey Medical School
2003 - 2005	JenFu Cheng, M.D.	New Jersey Medical School
2009 - 2011	Maya Evans, MD	New Jersey Medical School
2011 - 2013	Katherine Bentley, MD	New Jersey Medical School

TABLE 10

TRAUMATIC BRAIN INJURY FELLOWS

<u>Training Year</u>	<u>Fellow</u>	<u>Residency Program</u>
2001 - 2002	Ramon Lansang, MD Yali Li, MD, PhD	University of Pittsburgh SUNY Upstate
2002 - 2003	Jayarathne Kottage, MD	University of Missouri
2003 - 2004	Nino Dobrovic, MD, MPH	National Rehab Hospital
2004 - 2005	Michelle Miller, DO	New Jersey Medical School
2005 - 2006	Gary Galang, MD	University of Pittsburgh
2006 - 2007	Adam Schindelheim, MD	New Jersey Medical School
2007 - 2008	Michal Eisenberg, MD Neil Jasey, MD	New Jersey Medical School New Jersey Medical School
2008 - 2009	Omar Gomez Medina, MD	University of Puerto Rico Medical School
2010 - 2011	Michael Rhee, MD	New Jersey Medical School

TABLE 11

RESIDENT DOUBLE BOARDING PROGRAMS (1993-2003)

1. Uri Adler IM/PMR
2. Irfan Alladin IM/PMR
3. Michelle Fantasia Peds/PMR
4. Heakyung Kim Peds/PMR
5. Nancy Murphy Peds/PMR
6. Stephen Roman IM/PMR

TABLE 12**POST-DOCTORAL FELLOWS (Funded Primarily by NIH or NIDRR Grants)**

1.	Wanda Boda, PhD	07/01/91 - 06/30/93
2.	Sam Shiflett, PhD	01/01/92 - 06/30/94
3.	Susan Johnson, PhD	02/07/92 - 06/30/94
4.	Mary Ann Clark, EdD, PT	03/01/92 - 02/28/94
5.	Bruce Diamond, PhD, MED	06/01/92 - 05/31/94
6.	Hans Chaudhry, PhD	07/01/92 - 09/30/96
7.	Sue Ann Sisto, PhD, PT	10/01/92 - 09/30/95
8.	Krispin Mulunda, PhD	06/15/93 - 06/30/95
9.	Stanley Reisman, PhD	07/01/93 - 06/30/94
10.	Meenakshi Iyer, PhD, OTR	08/01/94 - 07/30/96
11.	Chong-Tae Kim, PhD	10/17/94 - 06/30/97
12.	Judith Deutsch, PhD, PT	01/03/95 - 02/29/96
13.	Gudrun Lange, PhD	04/06/95 - 04/06/97
14.	Peter Engler, PhD	08/01/95 - 06/30/96
15.	Kathy Carroll, PhD	09/06/95 - 07/12/96
16.	Lana Tiersky, PhD	09/06/95 - 09/04/97
17.	Ruby Engel, PhD	10/02/95 - 06/28/96
18.	Christopher Christodoulou, PhD	10/23/95 - 10/22/98
19.	Judith Redling, PhD	11/01/95 - 09/30/99
20.	Elizabeth Gaudino-Goering, PhD	09/03/96 - 09/02/98
21.	Nancy Madigan, PhD	12/02/96 - 12/05/97
22.	John Baker, PhD	10/01/97 - 09/30/99
23.	Kenneth Wood, PhD	01/05/98 - 01/04/99
24.	Heath Demaree, PhD	08/03/98 - 08/03/99
25.	Stephen Page, PhD, FAHA	10/01/98 - 10/01/00
26.	Maria Schultheis, PhD	11/30/98 - 11/30/02
27.	Nancy Chiaravalloti, PhD	07/12/99 - 07/01/01
28.	Marla Shawaryn, PhD	05/22/00 - 05/21/02
29.	Frank Hillary, PhD	07/10/00 - 07/09/01
30.	Deborah Bryant, PhD	07/24/00 - 07/23/02
31.	Jean Lengenfelder, PhD	09/01/00 - 08/30/01
32.	Gail Forrest, PhD	10/16/00 - 06/06/03
33.	Carol Miklos, PhD	09/24/01 - 06/06/03
34.	Jessica Kalmar, PhD	10/27/02 - 07/30/04
35.	Yael Goverover, MA, OT, PhD	09/02/02 - 08/31/04
36.	Aretoula Fullam, PhD	01/27/03 - 01/26/05
37.	Tamara Mills, PhD, OTR	01/12/04 - 01/07/05
38.	Amanda O'Brien, PhD	09/07/04 - 11/11/05
39.	Juan Carlos Arango, PhD	04/02/04 - 01/31/06
40.	Karen Nolan, PhD	01/31/05 - 01/26/07
41.	Gerald Voelbel, PhD	01/31/05 - 07/31/08
42.	Karen Hwang, EdD	04/01/05 - 12/31/08
43.	Peggy Schmitt, PhD	12/15/05 - 10/31/08
44.	Nitin Moholkar, PhD	07/03/06 - 07/02/08
45.	Peggy Chen, PhD	07/05/07 - 04/29/09
46.	James Sumowski, PhD	08/31/07 - 08/01/09
47.	Nam Kim, PhD	02/06/08 - 07/01/10
48.	Kevin Terry, PhD	03/03/08 - 03/31/10
49.	Sarah Dubowsky, PhD	06/03/08 - 06/18/10
50.	Victoria Leavitt, PhD	07/31/09 - 07/30/11

POST-DOCTORAL FELLOWS (Funded Primarily by NIH or NIDRR Grants) (cont'd)

51.	Denise Krch, PhD	10/01/09 - 09/30/11
52.	Elizabeth Galletta, PhD	09/30/09 - 09/30/11
53.	Abjhit Das, MD, DM	10/08/10 - 10/07/12
54.	Lawanda Ford-Johnson, PhD	02/28/11 - 02/27/13
55.	Rakesh Pilkar, PhD	04/04/11 - 04/03/13
56.	Feng Wei, PhD	07/21/11 - 07/20/13

TABLE 13

COMMITTEES OF THE DEPARTMENT OF PHYSICAL MEDICINE AND REHABILITATION

- Alumni – newsletter
- Appointments and Promotions – as well as faculty development
- Continuing Medical Education – Physician CME courses
- Graduate Medical Education – strengthen and improve residency training program
- Match – resident applicant interview and selection process
- Post doctoral and Research trainees – monitor postdoctoral program
- Research – monitor and coordinate research effort
- Medical Clinical Fellowship Training – monitor clinical fellow training program
- Undergraduate Medical Education – monitor medical student clerkships and opportunities
- Ad Hoc Department Executive Committee – department coordination and planning
- Ad Hoc OSCE Committee – develop and evaluate annual resident OSCE

TABLE 14

PM&R LOGO



Department of Physical Medicine & Rehabilitation
New Jersey Medical School

PREVIOUS PM&R LOGO (no longer legitimate)



TABLE 15a**THE TOP 10 UNITED STATES MEDICAL SCHOOLS WITH RESPECT TO THOSE ENTERING PM&R (SINCE 1947)**

Top 10 US Med School to PM&R	State	Count
NY College of Osteo Medicine NY Institute of Tech	NY	261
Wayne State University School of Medicine	MI	260
SUNY at Brooklyn College of Medicine	NY	201
Ohio State University College of Medicine	OH	193
Philadelphia College of Osteopathic Medicine	PA	179
New York Medical College	NY	175
UMDNJ – New Jersey Medical School	NJ	173
University of Puerto Rico School of Medicine	PR	162
University of Illinois College of Medicine	IL	149
University of Minnesota Medical School	MN	148

TABLE 15b**TOP ELEVEN MEDICAL SCHOOLS WITH RESPECT TO THOSE ENTERING PM&R SINCE 1993:**

State College of Osteo Medicine NY Institute of Tech	220
UMDNJ-New Jersey Medical School	130
Wayne State University School of Medicine	111
SUNY at Brooklyn College of Medicine	117
New York Medical College	98
University of Puerto Rico School of Medicine	98
Philadelphia College of Osteopathic Medicine	95
Western Univ of HS Col of Osteo Med of the Pacific	93
Nova Southeastern Univ College of Osteo Medicine	79
Chicago Col of Osteo Medicine Midwestern Univ	79
Indiana University School of Medicine	76

TABLE 16**RESIDENT AS TEACHER AWARD**

<u>Recipient</u>	<u>Year</u>
Pietro A. Memmo, M.D.	2000
Raymond Esquires, M.D.	2001
Robert Saverese, D.O.	2002
Gautam Malhotra, M.D.	2003
Helen Chung, M.D.	2004
Ariz Mehta, M.D.	2005
Gary P. Chimes, M.D., Ph.D.	2006
Nigel Shenoy, M.D.	2007
Maya C. Evans, M.D.	2008
Jennifer I. Epperlein, D.O.	2009
Benjamin Levy, M.D.	2010
Jiaxin Tran, M.D.	2011

TABLE 17**RESIDENCY TRAINING DIRECTORS**

Susan V. Garstang, M.D.	2005 - Present
Joel A. DeLisa, M.D., M.S.	1999 - 2005
Steven Kirshblum, M.D.	1996 - 1999
Joel A. DeLisa, M.D., M.S.	1987 - 1996
Richard Sullivan, M.D.	1982 - 1987
Luba Stefaniwsky, M.D.	1969 - 1982
Charles Brooke, M.D.	1958 - 1969

TABLE 18**NATIONAL TEACHING AWARD IN PHYSICAL MEDICINE AND REHABILITATION**

Year	Recipient	Affiliation
1988	Justus Lehmann, M.D.	University of Washington
1989	Frederic Kottke, M.D., Ph.D.	University of Minnesota
1990	Gerald Herbison, M.D.	Thomas Jefferson University
1991	Rene Calliet, M.D.	University of Southern California
1992	Barbara deLateur, M.D.	Johns Hopkins University
1993	George Kraft, M.D.	University of Washington
1994	Ernie Johnson, M.D.	Ohio State University
1995	Mehrsheed Sinaki, M.D.	Mayo Clinic
1996	Diane Cardenas, M.D.	University of Washington
1997	Stanley Herring, M.D.	University of Washington
1998	Daniel Dumitru, M.D.	University of Texas – San Antonio
1999	James Sliwa, D.O.	Rehabilitation Institute of Chicago/ Northwestern University
2000	Andrew Haig, M.D.	University of Michigan
2001	Lawrence Robinson, M.D.	University of Washington
2002	Kristjan Ragnarsson, M.D.	Mount Sinai School of Medicine of New York University
2003	Elliot Roth, M.D.	Northwestern University
2004	Ross Zafonte, D.O.	University of Pittsburgh School of Medicine
2005	Teresa L. Massagli, M.D.	University of Washington
2006	William F. Micheo, M.D.	University of Puerto Rico School of Medicine
2007	Jacqueline J. Werstch, M.D.	Medical College of Wisconsin
2008	John Whyte, M.D., Ph.D.	Moss Rehabilitation Research Institute
2009	Steven Flanagan, M.D.	New York University School of Medicine
2010	Walter R. Frontera, MD, PhD	University of Puerto Rico School of Medicine
2011	Michael L. Boninger, MD	University of Pittsburgh School of Medicine

TABLE 19**EDUCATIONAL REFERENCES FROM DEPARTMENT FACULTY**

1. DeLisa JA. Certificates for added/special qualifications. Status report and implications for the field. *Am J Phys Med Rehabil.* 1989;68(4):172-178.
2. DeLisa JA, Leonard JA Jr, Meier RH 3rd, Hammond M, Smith BS. Educational survey. Common questions asked by medical students about physiatry. *Am J Phys Med Rehabil.* 1990;69(5):259-265.
3. Findley TW, DeLisa JA. Research in physical medicine and rehabilitation. XI. Research training: setting the stage for lifelong learning. *Am J Phys Med Rehabil.* 1990;69(6):323-329.

4. DeLisa JA, Jain SS, Yablon SA. Resident interest in physical medicine and rehabilitation fellowships. Results of a survey. *Am J Phys Med Rehabil.* 1991;70(6):290-293.
5. DeLisa JA, Jain SS, Campagnolo D, McCutcheon PH. Selecting a physical medicine and rehabilitation residency. *Am J Phys Med Rehabil.* 1992;71(2):72-76.
6. DeLisa JA, Jain SS, McCutcheon PH. Current status of chairpersons in physical medicine and rehabilitation. *Am J Phys Med Rehabil.* 1992;71(5):258-262.
7. DeLisa JA, Jain SS, Campagnolo D, McCutcheon PH. A method to assess the trainee profiles of medical students attracted to our physical medicine and rehabilitation residency training program. *Am J Phys Med Rehabil.* 1993;72(1):2-5.
8. DeLisa JA. Academic physiatry. Trends, opportunities and challenges. *Am J Phys Med Rehabil.* 1993;72(3):113-116.
9. Jain SS, DeLisa JA, Campagnolo D. Chief residents in physiatry. Expectations v training. *Am J Phys Med Rehabil.* 1993;72(5):262-265.
10. DeLisa JA, Jain SS, Campagnolo DI. Factors used by physical medicine and rehabilitation residency training directors to select their residents. *Am J Phys Med Rehabil.* 1994;73(3):152-156.
11. Jain SS, DeLisa JA, Campagnolo DI. Methods used in the evaluation of clinical competency of physical medicine and rehabilitation residents. *Am J Phys Med Rehabil.* 1994;73(4):234-239.
12. DeLisa JA, Leonard JA Jr, Smith BS, Kirshblum S. Common questions asked by medical students about physiatry. Brief report. *Am J Phys Med Rehabil.* 1995;74(2):145-154.
13. DeLisa JA. Challenges for academic physiatry in the era of health care reform. A commentary. *Am J Phys Med Rehabil.* 1995;74(2):159-160.
14. DeLisa JA. Need for academic physiatry in the era of health care reform. *Am J Phys Med Rehabil.* 1995;74(3):234-236.
15. DeLisa JA, Jain SS, Campagnolo DI, Kirshblum SC, Findley T. Factors influencing the specialty choice of the physical medicine and rehabilitation graduating class of 1994 and the entering class of 1995. *Am J Phys Med Rehabil.* 1995;74(4):262-270.
16. DeLisa JA, Jain SS. Managed care and its effect on residency training in physical medicine and rehabilitation. A commentary. *Am J Phys Med Rehabil.* 1995;74(5):380-382.
17. DeLisa JA, Jain SS. Analyzing the National Resident Match data. Are there too many physical medicine and rehabilitation training positions? A commentary. *Am J Phys Med Rehabil.* 1996;75(2):141-143.
18. Bach JR, Haas F. Pulmonary Rehabilitation. *Phys Med Rehabil Clin N Am.* 1996;7(2):205-462, ix.
19. Jain SS, Nadler S, Eyles M, Kirshblum S, DeLisa JA, Smith A. Development of an objective structured clinical examination (OSCE) for physical medicine and rehabilitation residents. *Am J Phys Med Rehabil.* 1997;76(2):102-106.
20. DeLisa JA, Kirshblum S, Jain SS, et al. Practice and career satisfaction among physiatrists. A national survey. *Am J Phys Med Rehabil.* 1997;76(2):90-101.
21. DeLisa JA. Are transitional year programs obsolete because of proposed changes in graduate medical education funding? A commentary. *Am J Phys Med Rehabil.* 1997;76(5):431-432.

22. DeLisa JA, Jain SS, Kirshblum S. Medical ethics teaching in physiatry residency training programs: a commentary. *Am J Phys Med Rehabil.* 1998;77(4):358-359.
23. Kirshblum SC, DeLisa JA, Campagnolo DI. Mandatory clerkship in physical medicine and rehabilitation: effect on medical students' knowledge of physiatry. *Arch Phys Med Rehabil.* 1998 Jan;79(1):10-13.
24. DeLisa JA, Jain SS, Kirshblum S. Physiatric research fellows' perceptions of the quality of their training. *Am J Phys Med Rehabil.* 1998;77(5):412-414.
25. Jain SS, DeLisa JA, Eyles MY, Nadler S, Kirshblum S, Smith A. Further experience in development of an objective structured clinical examination for physical medicine and rehabilitation residents. *Am J Phys Med Rehabil.* 1998;77(4):306-310.
26. DeLisa JA, Jain SS, Kirshblum S. Residency training in physiatry during a time of change: funding of graduate medical education and other issues. *Am J Phys Med Rehabil.* 1998;77(4):311-316.
27. Braddom RL, Crawford J, DeLisa JA, Heilman D. Analysis of current practices in recruitment of residents for Physical Medicine and Rehabilitation: survey of PM&R department chairs. *Am J Phys Med Rehabil.* 1998;77(4):317-325.
28. DeLisa JA, Jain SS, Kirshblum S, Christodoulou C. Evidence-based medicine in physiatry: the experience of one department's faculty and trainees. *Am J Phys Med Rehabil.* 1999;78(3):228-232.
29. DeLisa JA. Certifying and measuring competency in the United States. *Arch Phys Med Rehabil.* 2000;81(9):1236-1241.
30. DeLisa JA. Evaluation of clinical competency. *Am J Phys Med Rehabil.* 2000;79(5):474-477.
31. Jain SS, DeLisa JA, Nadler S, et al. One program's experience of OSCE vs. written board certification results: a pilot study. *Am J Phys Med Rehabil.* 2000;79(5):462-467.
32. Verville R, DeLisa JA. The evolution of Medicare financing policy for graduate medical education and implications for PM&R: a commentary. *Arch Phys Med Rehabil.* 2001;82(4):558-562.
33. DeLisa JA, Foye PM, Jain SS, Kirshblum S, Christodoulou C. Measuring professionalism in a physiatry residency training program. *Am J Phys Med Rehabil.* 2001;80(3):225-229.
34. Stitik TP, Foye PM, Chen B, DePrince M, McKenna C, Bach JR. Medical student feedback: a mechanism to improve a multi-instructor clinical lecture series? *Am J Phys Med Rehabil.* 2002;81(8):633-635.
35. Vasan N, Foye P, Watson S. Residents' teaching of anatomy in the laboratory: enhancement of student learning. *Acad Med.* 2002;77(5):467-468.
36. Millis SR, Jain SS, Eyles M, et al. Assessing physicians' interpersonal skills: do patients and physicians see eye-to-eye? *Am J Phys Med Rehabil.* 2002;81(12):946-951.
37. Campagnolo DI, Stier KT, Sanchez W, Foye PM, DeLisa JA. Spinal cord injury computer-assisted instruction for medical students. *Am J Phys Med Rehabil.* 2003;82(4):316-319.
38. Millis SR, Campagnolo DI, Kirshblum S, Elovic E, Jain SS, DeLisa JA. Improving resident research in physical medicine and rehabilitation: impact of a structured training program. *J Spinal Cord Med.* 2004;27(5):428-433.
39. DeLisa JA. Physiatry: medical errors, patient safety, patient injury, and quality of care. *Am J Phys Med Rehabil.* 2004;83(8):575-583.

40. Stitik TP, Foye PM, Nadler SF, Chen B, Schoenherr L, Von Hagen S. Injections in patients with osteoarthritis and other musculoskeletal disorders: use of synthetic injection models for teaching physiatry residents. *Am J Phys Med Rehabil.* 2005;84(7):550-559.
41. DeLisa JA, Thomas P. Physicians with disabilities and the physician workforce: a need to reassess our policies. *Am J Phys Med Rehabil.* 2005;84(1):5-11.
42. Komaroff E, DeLisa JA. Best research evidence for physical medicine and rehabilitation. *J Spinal Cord Med.* 2009;32(1):3-5.
43. Foye PM, Vasan NS, Holland BK. Physical Medicine & Rehabilitation Residents Teaching Clinical Anatomy In The Gross Anatomy Lab: Enhanced Student Performance. *WebmedCentral Medical Education* 2011;2(1):WMC001483. [Original Research]

TABLE 20

PM&R FACULTY

PROFESSOR

Joel A. DeLisa, MD, MS
 John R. Bach, MD
 Anna Barrett, MD
 John DeLuca, PhD
 Thomas Findley, MD, PhD
 Bruce M. Gans, MD, MS
 Jordan Grafman, PhD
 Sudesh S. Jain, MD
 Steven Kirshblum, MD
 Gudrun Lange, PhD
 Todd Linsenmeyer, MD
 Todd Stitik, MD

ASSOCIATE PROFESSOR

Eric L. Altschuler, MD, PhD
 Nancy D. Chiaravalloti, PhD
 Whitson Thomas Edwards, PhD
 Patrick M. Foye, MD
 Bruce Pomeranz, MD

ASSISTANT PROFESSOR

Uri Adler , MD
 Peter J. Barrance, PhD
 Barbara Benevento, MD
 Amanda Botticello, PhD, MPH
 Noelle Carlozzi, PhD
 Peggy Chen, PhD
 JenFu Cheng , MD
 Trevor Dyson-Hudson, MD
 Gail F. Forrest, PhD
 Denise Fyffe, PhD
 Elizabeth Galletta, PhD
 Helen Genova, PhD
 Karen Kepler, DO, PhD
 Yekyung Kong , MD

Jean Lengenfelder, PhD
Anthony Lequerica, PhD
Christin McKenna, MD, PhD
Karen Nolan, PhD
Lauren Strober, PhD
James Sumowski, PhD
Glenn Wylie, PhD
Peter Yonclas, MD

INSTRUCTOR

Kathleen Hodgkiss, PhD
Denise Krch, PhD
Victoria Leavitt, PhD
Pankaj Patel, MD

CLINICAL PROFESSOR

Randall Braddom, MD, MS
Hang J. Lee, MD
Gerard Malanga, MD

CLINICAL ASSOCIATE PROFESSOR

Jeffrey Cole, MD
Martin Diamond, MD
Susan V. Garstang, MD
Gregory J. Mulford, MD

CLINICAL ASSISTANT PROFESSOR

Paul Abend, DO
Thomas Agesen, MD
Elinor Anan, MD
Michael Armento, MD
Allison Averill, MD
Richard Bach, MD
Keith Benoff, PhD
Jay Bowen, DO
Monifa Brooks, MD
Thomas J. Cava, MD
Boqing Chen, MD, PhD
Monica Clement, PhD
Ann Cotter, MD
Arthur Cytryn, MD
Michele Fantasia, MD
Jeffrey Fossati, MD
Kathleen Francis, MD
Carol Gill, MD
Chae K. Im, MD
Neil Jasey, Jr., MD
Rohit Keswani, MD
Robert Klecz, MD
MyLan Lam, MD
Thomas E. Lammertse, MD
Steven Lim, MD
Rex T. Ma, MD, MS

Gautam Malhotra, MD
Ariz Mehta, MD
Jeremiah Nieves, MD
Shailesh Parikh, MD
Leonora Rivera, MD
Vipul Shah, MD
Nigel Shenoy, MD
Qing Tai, MD, PhD
Joseph Valenza, MD
Loran Vocaturro, EdD
Robert Vrablick, MD

CLINICAL INSTRUCTOR

Kimberly McGuire, PhD
Monique J. Tremaine, PhD

ASSOCIATE

Cesar Roige
Charles A. Sara, BS, MS
Howard Saunders

TABLE 21

MAJOR TEXTBOOKS AUTHORED BY PM&R FACULTY, 1994-2011

1. DeLisa JA, Lee HJ, Baran EM, Lai KS, Spielholz N, Mackenzie K, eds. *Manual of Nerve Conduction Velocity and Clinical Neurophysiology*. 3rd ed. New York, NY: Raven Press; 1994.
2. Buschbacher RM, Braddom RL, eds. *Sports Medicine and Rehabilitation: a Sport-Specific Approach*. Philadelphia, PA: Hanley & Belfus Inc; 1994.
3. Stover SL, DeLisa JA, Whiteneck GG, eds. *Spinal Cord Injury: Clinical Outcomes from the Model Systems*. Gaithersburg, MD: Aspen Publications; 1995.
4. Bach JR, ed. *Pulmonary Rehabilitation: the Obstructive and Paralytic Conditions*. Philadelphia, PA: Hanley & Belfus Inc; 1996.
5. DeLisa JA, Gans BM, Bockenek WL, et al, eds. *Rehabilitation Medicine: Principles and Practice*. 3rd ed. Philadelphia, PA: Lippincott-Raven; 1998.
6. Bach JR, Tzeng AC. *Guide to the Evaluation and Management of Neuromuscular Disease*. Philadelphia, PA: Hanley & Belfus; 1999.
7. Rosenthal M, Griffith ER, Kreutzer J, Pentland B, eds. *Rehabilitation of the Adult and Child with Traumatic Brain Injury*. 3rd ed. Philadelphia, PA: F.A. Davis; 1999.
8. Lee HJ, DeLisa JA. *Surface Anatomy for Clinical Needle Electromyography*. New York, NY: Demos; 2000.
9. Kirshblum S, Campagnolo DI, DeLisa JA, eds. *Spinal Cord Medicine*. Philadelphia, PA: Lippincott, Williams & Wilkins; 2002.
10. Malanga G, Nadler S. *Whiplash*. Philadelphia, PA: Hanley & Belfus Inc; 2001.
11. Bach JR. *Noninvasive Mechanical Ventilation*. Philadelphia, PA: Hanley & Belfus Inc. 2002.

12. Feinberg JH, Spielholz NI, eds. *Peripheral Nerve Injuries in the Athlete*. Champaign, IL: Human Kinetics; 2003.
13. Braddom RL, Peterson AT. *Handbook of Physical Medicine and Rehabilitation*. Philadelphia, PA: Saunders; 2004.
14. DeLisa JA, Gans BM, Walsh NE, et al, eds. *Physical Medicine and Rehabilitation: Principles and Practice*. 4th ed. Philadelphia, PA: Lippincott Williams & Wilkins; 2005.
15. Lee HJ, DeLisa JA. *Manual of Nerve Conduction Study and Surface Anatomy for Needle Electromyography*. 4th ed. Philadelphia, PA: Lippincott Williams & Wilkins; 2005.
16. Bach JR. *Management of Patients with Neuromuscular Disease*. Philadelphia, PA: Hanley & Belfus; 2004.
17. DeLuca J. *Fatigue as a Window to the Brain*. Cambridge, MA: MIT Press; 2005.
18. Braddom RL, Buschbacher RM, Chan L, et al, eds. *Physical Medicine and Rehabilitation*. 3rd ed. Philadelphia, PA: Saunders Elsevier; 2007.
19. Stitik TP, ed. *Injection Procedures: Osteoarthritis and Related Conditions*. New York, NY: Springer Publishing Co: 2009.
20. Hillary FG, DeLuca J. *Functional Neuroimaging in Clinical Populations*. New York, NY: Guilford Press; 2007.
21. Findley TW, Schleip R. *Fascia Research: Basic Science and Implications for Conventional and Complementary Health Care*. Munich, DE: Elsevier; 2007.
22. DeLuca J, Kalmar JH, eds. *Information Processing Speed in Clinical Populations*. New York, NY: Taylor & Francis; 2008.
23. Schultheis MT, DeLuca J, Chute DL, eds. *Handbook for the Assessment of Driving Capacity*. Amsterdam, NL: Academic Press; 2009.
24. Kreutzer, J.S., DeLuca, J., & Caplan, B. (Eds.) (2010). *Encyclopedia of Clinical Neuropsychology* (Vols. 1-4). New York: Springer.
25. Frontera, W. R., DeLisa, J. A., Gans, B. M., Walsh, N. E., Robinson, L. R., et al (Eds). (2010). *DeLisa's Physical Medicine & Rehabilitation: Principles and Practice* (5th ed.). Philadelphia, PA: Walter Kluwers Health/Lippincott Williams & Wilkins.
26. Kirshblum, S, Campagnolo, D (Eds). (December 5, 2011). *Spinal Cord Medicine* (2nd ed). Lippincott Williams & Wilkins.
27. Bach JR, Haas F (eds). *Pulmonary Rehabilitation*. Phys med Rehabil Clin N am. Philadelphia: WB Saunders, 1996, 462 pages.
28. Hill NS, Bach JR (eds). *Noninvasive Ventilation*. Respir Care Clin N am. Philadelphia: WB Saunders, 1996, 352 pages.
29. Bach JR, Ishikawa Y. *Respiratory Management for Neuromuscular Ventilatory Failure: a Manual of M/MIPPV* (in Japanese). Tokyo: Nihon Souni-iji Shuppansha, 1996, 116 pages.

TABLE 22

DISTINGUISHED ALUMNI

1999	Denise Campagnolo, M.D.
2000	William L. Bockenek, M.D.
2001	Joseph W. Cheu, D.O., RPh, Ph.D.
2002	John Chae, M.D.
2003	Scott Nadler, D.O.
2004	Stuart Yablon, M.D.
2005	Lisa Krivickas, M.D.
2006	Jeffrey J. Fossati, M.D.

DISTINGUISHED ALUMNI (cont'd)

2007 Todd P. Stitik, M.D.
2008 Gerard Francisco, M.D.
2009 Gerard Malanga, M.D.

TABLE 23

FACULTY PARTIALLY OR COMPLETELY FUNDED BY NEW JERSEY MEDICAL SCHOOL AND UNIVERSITY HOSPITAL

<u>FACULTY</u>	<u>FROM</u>	<u>TO</u>
Eric Altschuler, M.D, Ph. D.	2005	Present
John Bach, M.D.	1983	Present
Fadi Bejjani, M.D.	1991	1996
Denise Campagnolo, M.D., M.S.	1998	2004
Boqing Chen, M.D., Ph.D.	1998	2002 (currently holds faculty appointment)
Joel A. DeLisa, M.D., M.S.	1987	Present
Patrick Foye, M.D.	1996	Present
Susan Garstang, M.D.	2005	2009 (currently holds faculty appointment)
Joe Kalangie, M.D.	1981	1989
Karen Kepler, D.O., Ph.D.	2004	2006 (currently holds faculty appointment)
Robert Krotenberg, M.D.	1984	1987
Ajay Kumar, M.D.	2005	2006
Scott Nadler, D.O.	1994	2004
Horia Schwartz, M.D.	1978	1987
Daniel Shin, M.D.	1987	1989
Julian Sosner, M.D.	1988	1989
Todd Stitik, M.D.	1994	Present
Richard Sullivan, M.D.	1975	1987
Peter Yonclas, M.D.	2003	2008
Robert White, M.D.	1989	1993

TABLE 24

**DEPARTMENT OF PHYSICAL MEDICINE AND REHABILITATION
RESIDENT GRADUATING CLASS BY YEAR**

1988

William Kuiper, M.D.
Daniel Rosenberg, M.D.

1989

Elliot Bodofsky, M.D.**
Joseph Doerr, M.D.
Henry Wroblewski, M.D.

1990

Brian Fellechner, D.O.**
Herman Jimenez-Medina M.D.
Roger Klima, M.D.**
Joel Meer, M.D.
Judy Price, D.O.

RESIDENT GRADUATES (cont'd)

Dennis Rosato, M.D.
DiLip Shah, M.D.
Richard Zaniewski, D.O.

1991

William Bockenek, M.D.**
Michael Harris, M.D.
Danel Lyons, M.D.
Thomas Rugino, M.D.
Michael Shramowait, M.D.
James Sullivan, D.O.
Stuart Yablon, M.D.**

1992

Mike Armento, M.D.
Denise Campagnolo, M.D.**
Alan Davis, M.D.
Wayne Dubov, M.D.
Edward Gangemi, M.D.
Joel Joslewitz, M.D.
Gerard Malanga, M.D.**

1993

Wing Chau, M.D.
Richard Day, M.D.
Kathleen Francis, MD
Barry Gendron, D.O.**
Irving Haber, D.O.
Michael Hennigan, M.D.
Joseph Peters, M.D.
Marc Reiskind, M.D.
Margaret Tilton, M.D.
Ronald Tolchin, D.O.**

1994

John Chae, M.D.**
Gerard Francisco, M.D.**
David Idank, D.O.
Chang Lee, MD, Ph.D.
Scott Nadler, D.O.*, **
Kevin O'Connor, M.D.
Vipul Shah, M.D.
Warren Slaten, M.D.
Todd Stitik, M.D.

1995

Mary Ellen Brady, M.D.
Elinor Cohen, M.D.
Jeffrey Fossati, M.D.
Robert Klecz, M.D.
Yekyung Kong, M.D.
Lisa Krivickas, M.D.*, **
Nancy Murphy, M.D.
Robert Vrablick, M.D.**

RESIDENT GRADUATES (cont'd)

1996

Barbara Benevento, M.D.
Harmeen Chawla, M.D.
Brian Davis, M.D.
Sandra Dean, M.D.**
Evander Duck, Jr., M.D.
Mohan Gulati, M.D.
Glen Kaye, M.D.
Lauri Orbach, M.D.
John Shumko, M.D., Ph.D.**
Joseph Valenza, M.D.

1997

Peiti Sam Cai, M.D.
Andrea Cheville, M.D.**
Donna DePhillips, M.D.
Ted Freeman, D.O.
John Horton, III, M.D.
Cristin Jouve, M.D.
Supriya Massood, D.O.
Anju Rustagi, M.D.**
Ilana Zabloski, M.D.

1998

Phillippe Chemaly, D.O.
Boqing Chen, M.D., Ph.D.
Joseph Cheu, D.O., Ph.D.*
Lucy Juvan, M.D. **
Heakyung Kim, M.D.
Alex Lee, M.D.
Jason Lipetz, M.D.**
Mary Powell-St. Louis, M.D.
Albert Tomaio, M.D.

1999

Alice Chen, M.D.
Paul Cooke, M.D.**
Michelle Fantasia, M.D.
Nancy Feiwei, M.D.
Alan Friedman, M.D.
Linda Graves, M.D.
Brian Greenwald, M.D.**

2000

Richard Bach, M.D.
Lisa Bartoli, D.O., M.S.**
James Girardy, M.D.
Rohit Keswani, M.D.
Steven Lim, M.D.
Christopher Lutz, M.D.
Sheryl Movasas, D.O.
Yong Park, M.D.**
Nicholas Potochny, D.O.
Jodi Thomas, M.D.
Patricia Young, M.D.

RESIDENT GRADUATES (cont'd)

2001

Norman Haueisen, D.O.**
Li Li, M.D.
Peter Moley, M.D.**
Deborah Oranchak, D.O.
Vinit Pande, M.D.
Tie Qian, M.D.
Rachel Smith, D.O.

2002

Uri Adler, M.D.
Nancy Kim, M.D.**
Rex Ma, M.D.
Pietro Memmo, M.D.**
Chris Perez, M.D.
Stephen Roman, M.D.
Mariam Rubbani, M.D.
Qing Tai, M.D., Ph.D.

2003

Iran Alladin, M.D.
Jen Fu Cheng, M.D.
Raymond Esquieres, M.D. **
Karen Kepler, D.O., Ph.D.
Daniel Kim, M.D.
Elena Napolitano, M.D.
Robert Savarese, D.O.**
Jennifer Solomon, M.D.
Alice Tzeng, M.D.
Peter Yonclas, M.D.

2004

Danielle Aufiero, M.D.
Elaine Aufiero, M.D.
Wah Lee, DO, M.S.
Saira Chaudhny Lee, M.D.
Michele Miller, D.O.**
Luke Rigolosi, M.D.**

2005

Aryang Abbasu, D.O.**
Helen Chung, M.D.
Rae Davis, M.D.
Gautam Malhotra, M.D.
Bradley Marcus, D.O.
Sunny Kim, M.D.**
John Riggs, M.D.
Aleya Salam, M.D.

2006

Charles Buttaci, D.O., P.T.**
Gary Chimes, M.D., Ph.D.
Stephen Cohen, M.D.
Michael Mehnert, M.D.
James McLean, M.D.**
Casey O'Donnell, D.O.
Michael Romello, M.D.

RESIDENT GRADUATES (cont'd)

Askhat Shah, M.D.
Adam Schindelheim, M.D.
Kyle Stier, M.D.

2007

Michael Eisenberg, M.D.
Kelly Heath, M.D.**
Neil Jasey, M.D.
Cristin McKenna, M.D., Ph.D.
Ariz Mehta, M.D.**
Jeremiah Nieves, M.D.

2008

Andrew Ankamah, M.D.
Jessica Bloomgarden, M.D.
Richard Denticio, M.D.
Kristina Hicks, M.D.
Roseanna Jackson-Parekh, M.D.**
Ronald Karnaugh, M.D.
Stacy Miller-Smith, M.D.
Christopher Visco, M.D.**

2009

Steve Aydin, D.O.
Gina Benaquista, D.O.
Jennifer Epperlein, D.O.**
Maya Evans, M.D.
Jonathan Kirschner, M.D.**
Chiawen (Lucy) Liang, M.D.
Arik Mizrachi, M.D.
John Reimer, M.D.
Michael Rhee, M.D.
Elizabeth Varghese-Knoll, M.D.
Nigel Shenoy, M.D.
David Tung, M.D.
Brian White, D.O.

2010

Neeti A. Bathia, M.D.
Miguel A. Coba, M.D.
Margaret M. Donlon, M.D.
Brett A. Gerstman, M.D.**
Richard P. Hoppe, M.D.
Stephanie K. Liu, M.D.
Janel Solano, D.O.
James F. Wyss, M.D., M.P.T.**

2011

Katherine Bentley, M.D.
Santiago Campos, M.D.
Anupama Ganga, M.D.
Kelly Scollon-Grieve, M.D.
Benjamin Levy, M.D.**
Bethany Lipa, M.D.
Amrish Patel, M.D., P.T.**

2012 (Projected)

SuAnn Chen, M.D.
Eduardo Cruz-Colon, M.D.**
Amanda Farag, M.D.
Debra Ibrahim, D.O.**
Monika Krzyzek, D.O.
Anthony Lee, M.D.
Kirk Lercher, M.D.
Christine Pfisterer, D.O.
Christine Roque, D.O.
Mark Sison, M.D.

* Deceased

** Chief Resident

TABLE 25

ALUMNI AWARD

Denise Campagnolo, M.D.	1999
Bill Bockenek, M.D.	2000
Joe Chen, D.O., Ph.D.	2001
John Chae, M.D.	2002
Scott Nadler, D.O.	2003
Stuart Yablon, M.D.	2004
Lisa Krivickas, M.D.	2005
Jeffrey Fossati, M.D.	2006
Todd Stitik, M.D.	2007
Gerard Francisco, M.D.	2008
Gerald Malanga, M.D.	2009
Andrea L. Cheville, M.D.	2010
Brian A. Davis, M.D.	2011

